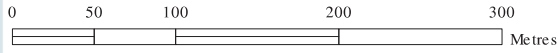


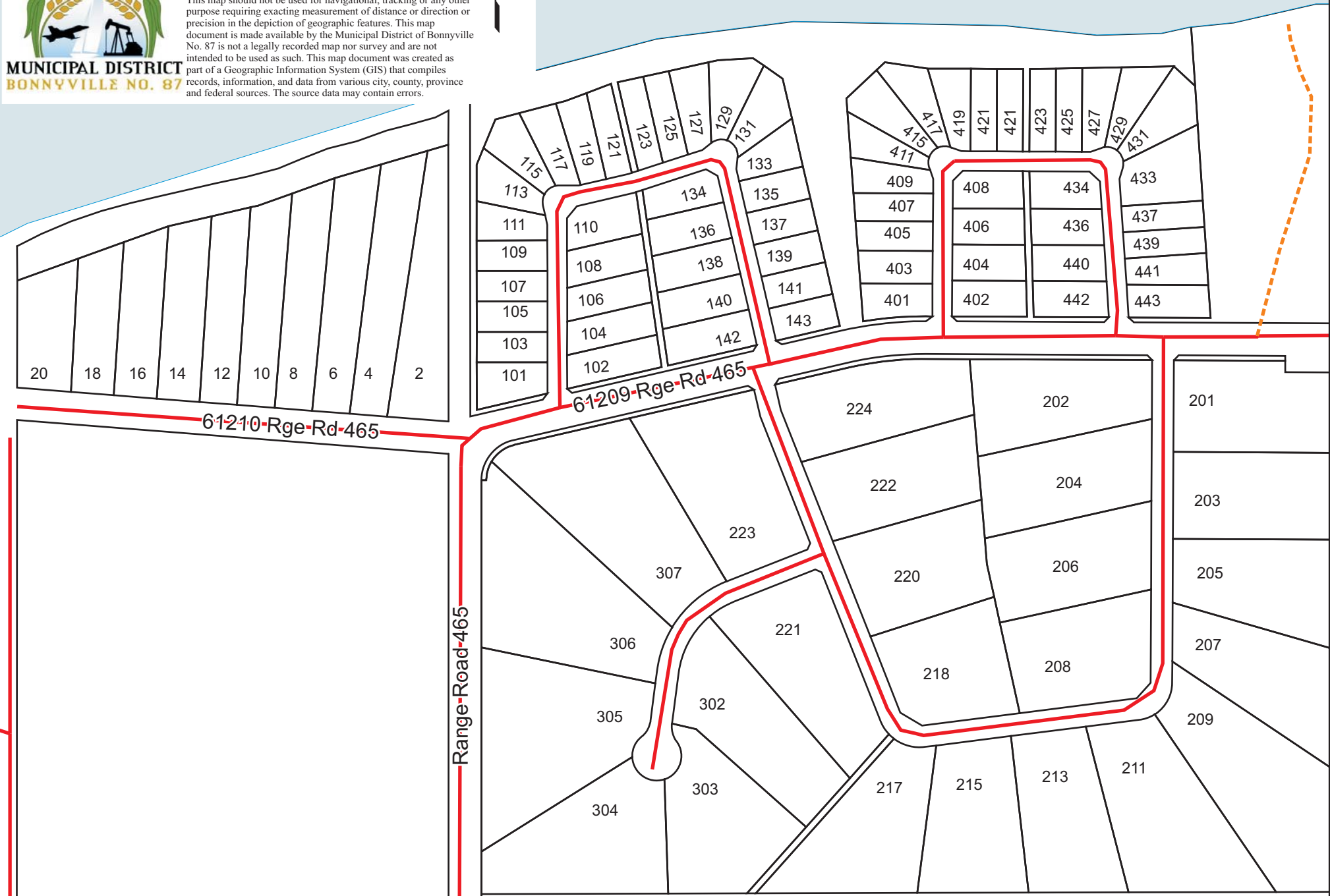
BIRCH GROVE AND EAGLE'S NEST SUBDIVISIONS



**MUNICIPAL DISTRICT
BONNYVILLE NO. 87**

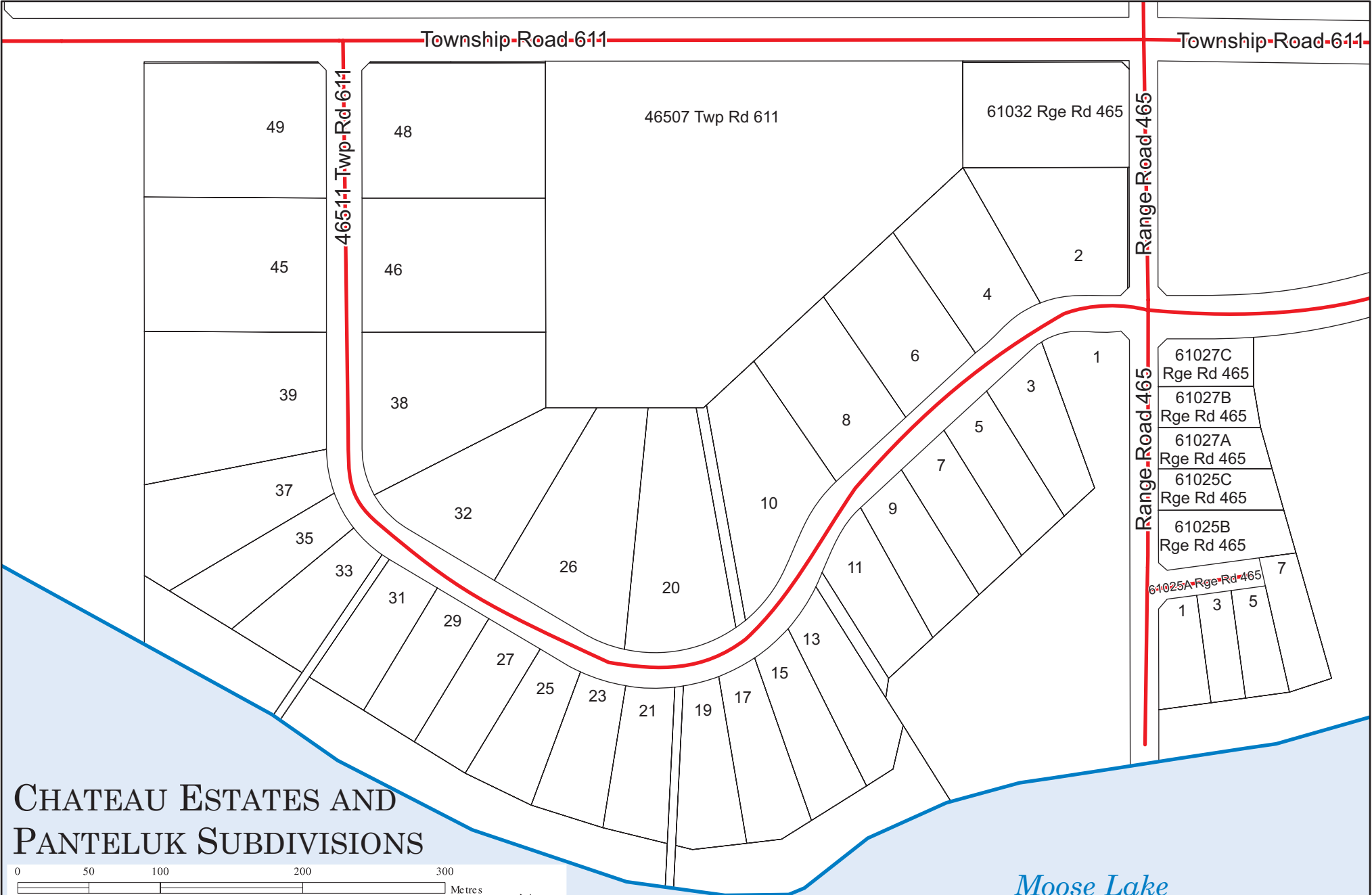
Disclaimer
This map should not be used for navigational, tracking or any other purpose requiring exacting measurement of distance or direction or precision in the depiction of geographic features. This map document is made available by the Municipal District of Bonnyville No. 87 is not a legally recorded map nor survey and are not intended to be used as such. This map document was created as part of a Geographic Information System (GIS) that compiles records, information, and data from various city, county, province and federal sources. The source data may contain errors.

Moose Lake

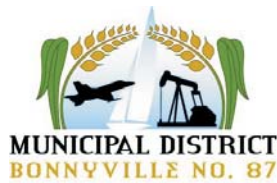
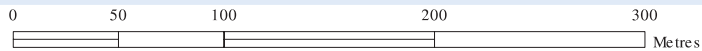


Township-Road-611

Township-Road-611

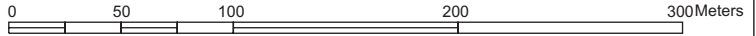


CHATEAU ESTATES AND PANTELUK SUBDIVISIONS



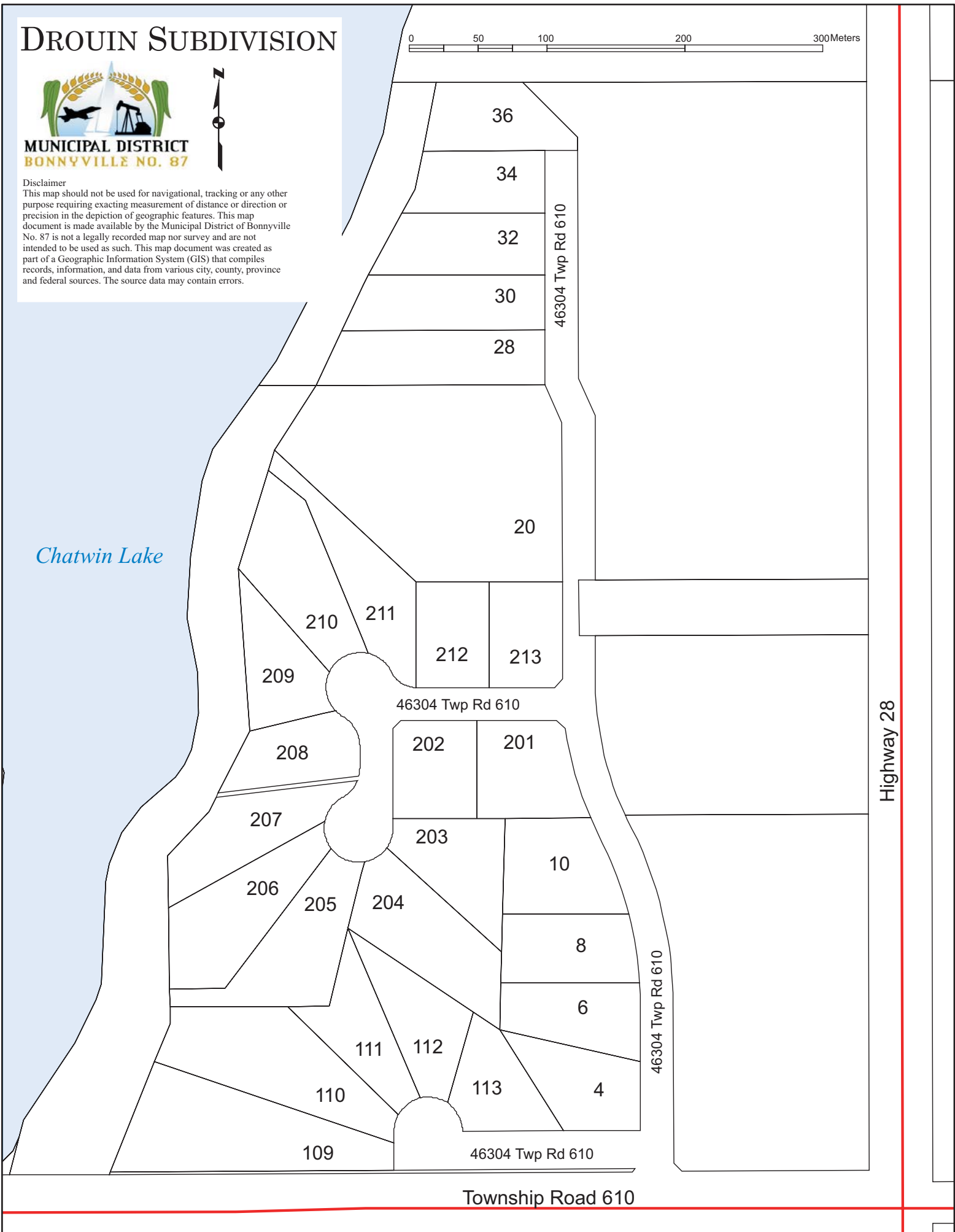
Disclaimer
 This map should not be used for navigational, tracking or any other purpose requiring exacting measurement of distance or direction or precision in the depiction of geographic features. This map document is made available by the Municipal District of Bonnyville No. 87 is not a legally recorded map nor survey and are not intended to be used as such. This map document was created as part of a Geographic Information System (GIS) that compiles records, information, and data from various city, county, province and federal sources. The source data may contain errors.

DROUIN SUBDIVISION

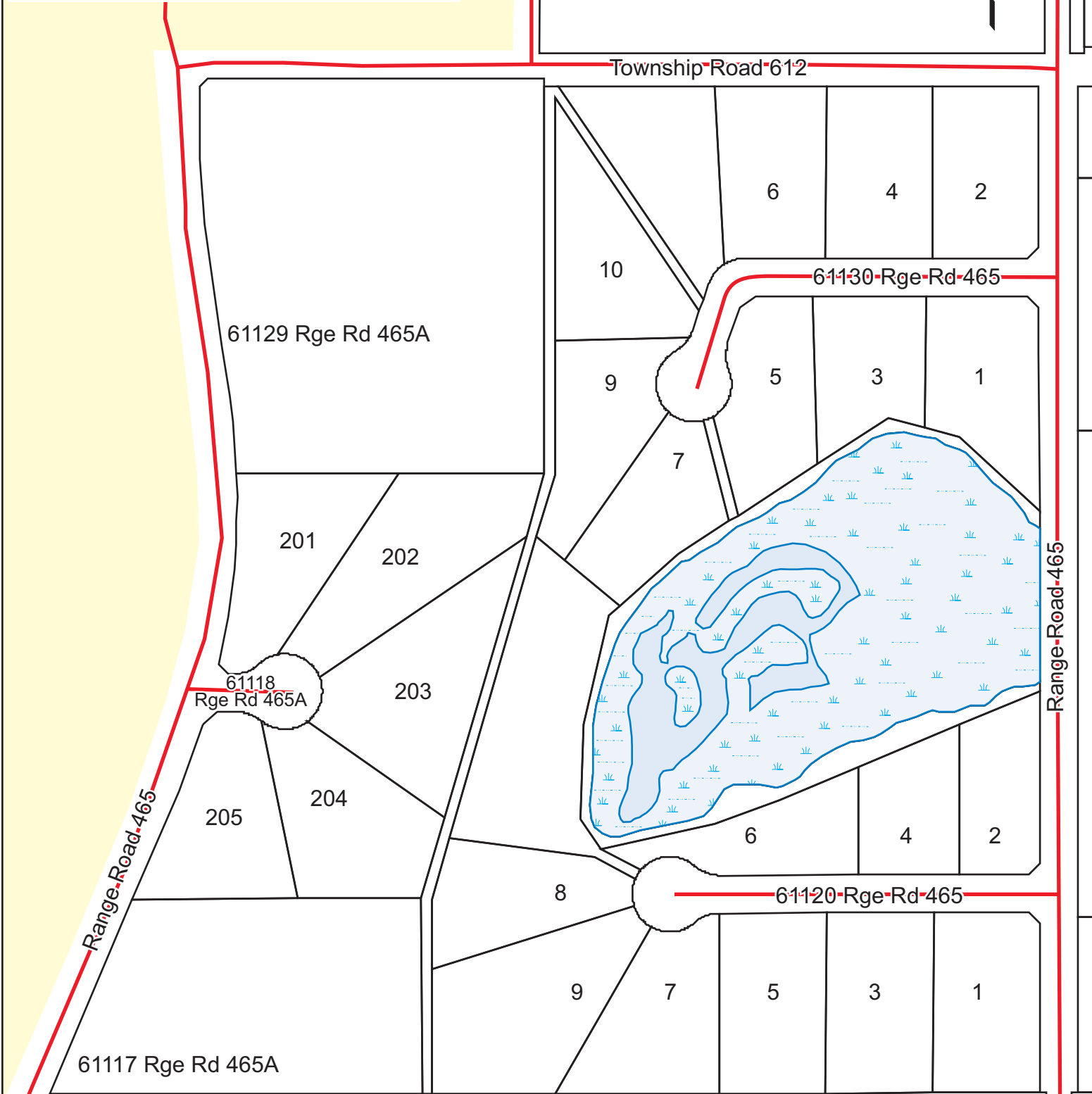


Disclaimer
This map should not be used for navigational, tracking or any other purpose requiring exacting measurement of distance or direction or precision in the depiction of geographic features. This map document is made available by the Municipal District of Bonnyville No. 87 is not a legally recorded map nor survey and are not intended to be used as such. This map document was created as part of a Geographic Information System (GIS) that compiles records, information, and data from various city, county, province and federal sources. The source data may contain errors.

Chatwin Lake



ELK HAVEN SUBDIVISION



DISCLAIMER
This map should not be used for navigational, tracking or any other purpose requiring exacting measurement of distance or direction or precision in the depiction of geographic features. This map document is made available by the Municipal District of Bonnyville No. 87 is not a legally recorded map nor survey and are not intended to be used as such. This map document was created as part of a Geographic Information System (GIS) that compiles records, information, and data from various city, county, province and federal sources. The source data may contain errors.

MUNICIPAL DISTRICT
BONNYVILLE NO. 87

Highway 660

2

4

6

8

10

12

14

16

18

20

22

24

61307 Rge Rd 470

7

9

11

3

21

25

14

12

10

5

7

61303 Rge Rd 470

19

17

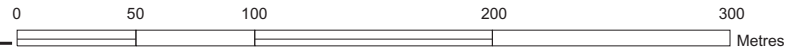
15

13

11

9

EVERGREEN ESTATES

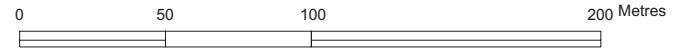


MUNICIPAL DISTRICT
BONNYVILLE NO. 87

Disclaimer
 This map should not be used for navigational, tracking or any other purpose requiring exacting measurement of distance or direction or precision in the depiction of geographic features. This map document is made available by the Municipal District of Bonnyville No. 87 is not a legally recorded map nor survey and are not intended to be used as such. This map document was created as part of a Geographic Information System (GIS) that compiles records, information, and data from various city, county, province and federal sources. The source data may contain errors.



FERBY SUBDIVISION



Disclaimer
This map should not be used for navigational, tracking or any other purpose requiring exacting measurement of distance or direction or precision in the depiction of geographic features. This map document is made available by the Municipal District of Bonnyville No. 87 is not a legally recorded map nor survey and are not intended to be used as such. This map document was created as part of a Geographic Information System (GIS) that compiles records, information, and data from various city, county, province and federal sources. The source data may contain errors.

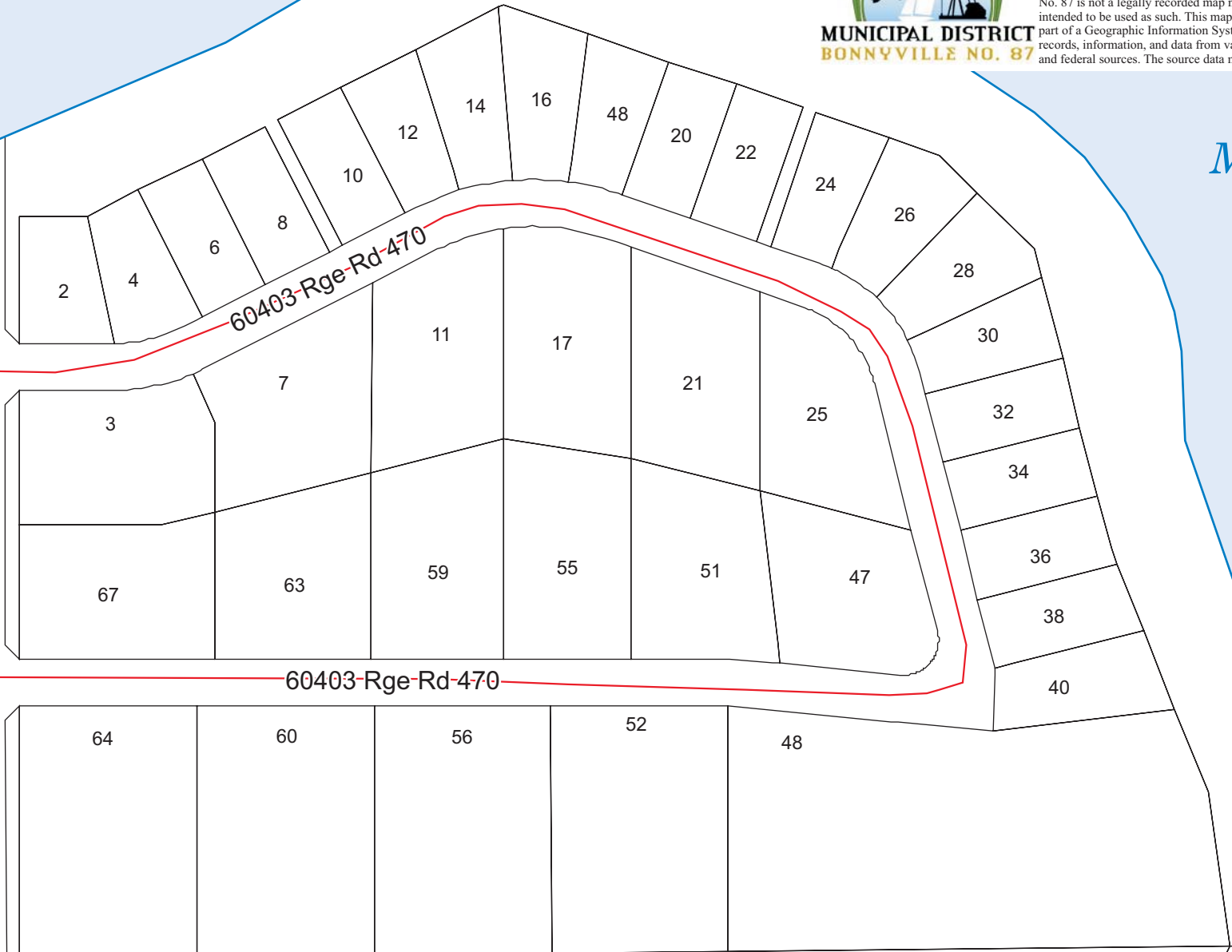


Moose Lake

Range-Road-470

60403-Rge-Rd-470

60403-Rge-Rd-470



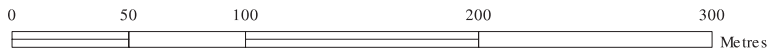
Moose Lake

464-10-Twp-Rd-6-10

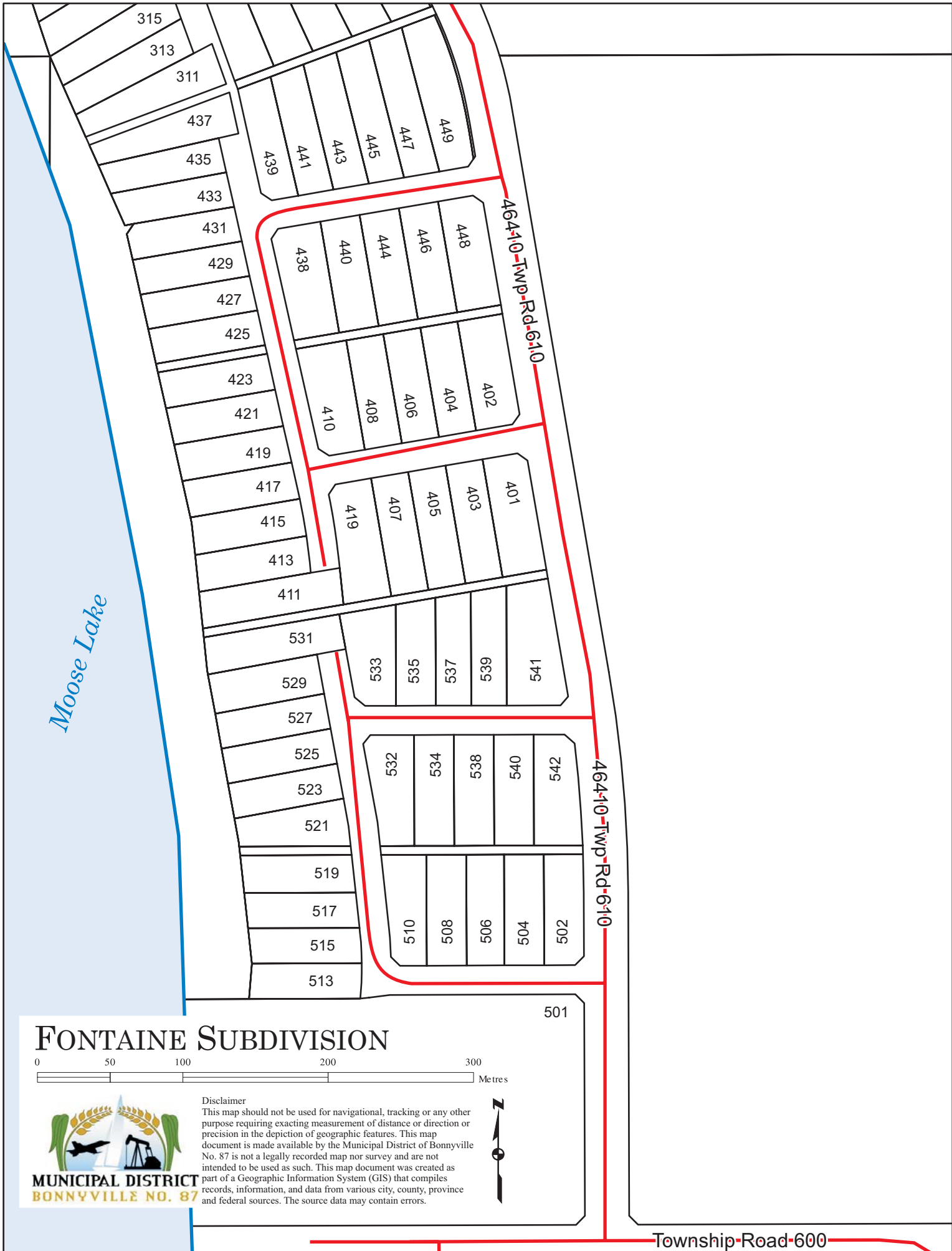
464-10-Twp-Rd-6-10

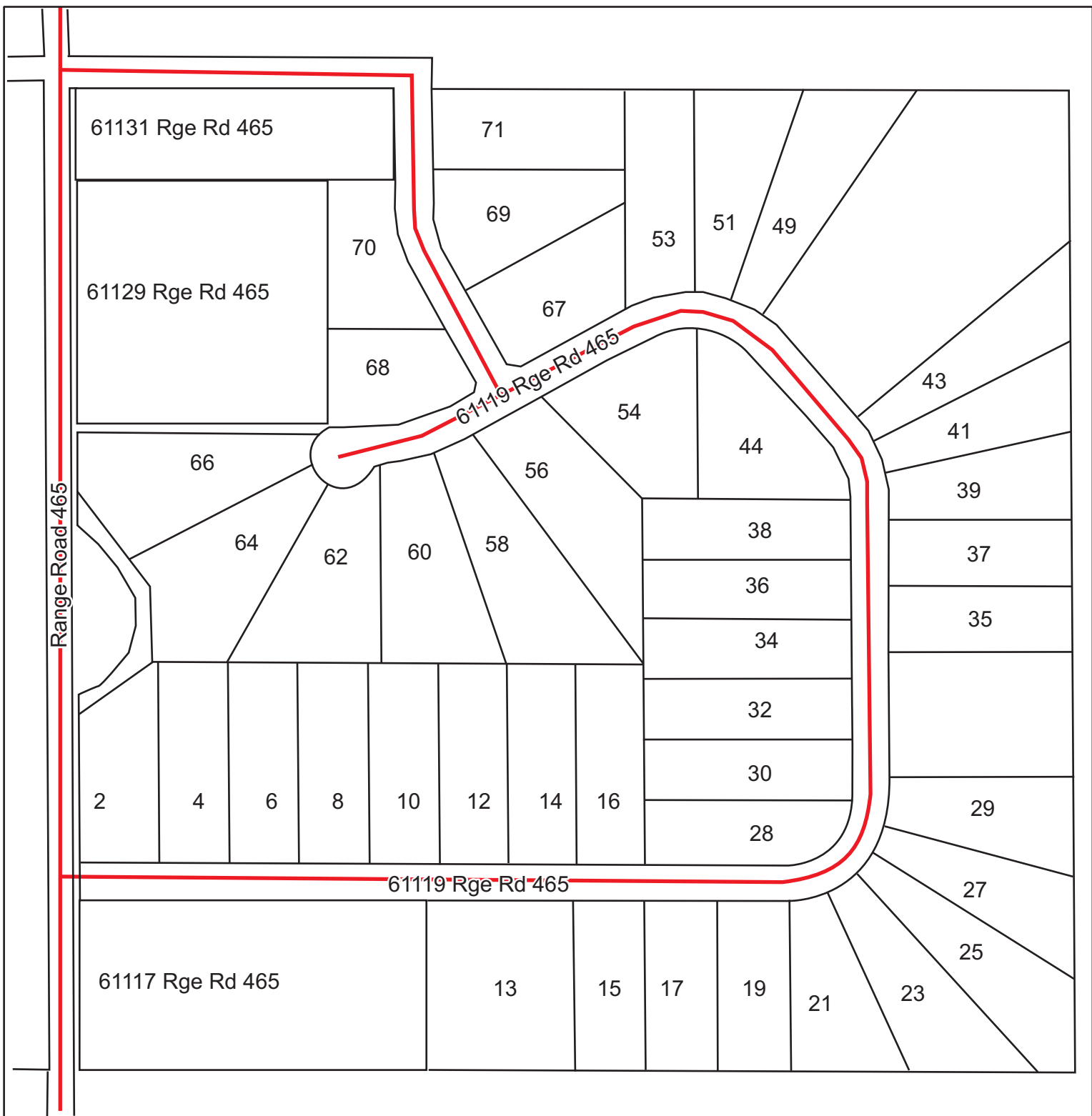
Township Road 600

FONTAINE SUBDIVISION



Disclaimer
This map should not be used for navigational, tracking or any other purpose requiring exacting measurement of distance or direction or precision in the depiction of geographic features. This map document is made available by the Municipal District of Bonnyville No. 87 is not a legally recorded map nor survey and are not intended to be used as such. This map document was created as part of a Geographic Information System (GIS) that compiles records, information, and data from various city, county, province and federal sources. The source data may contain errors.





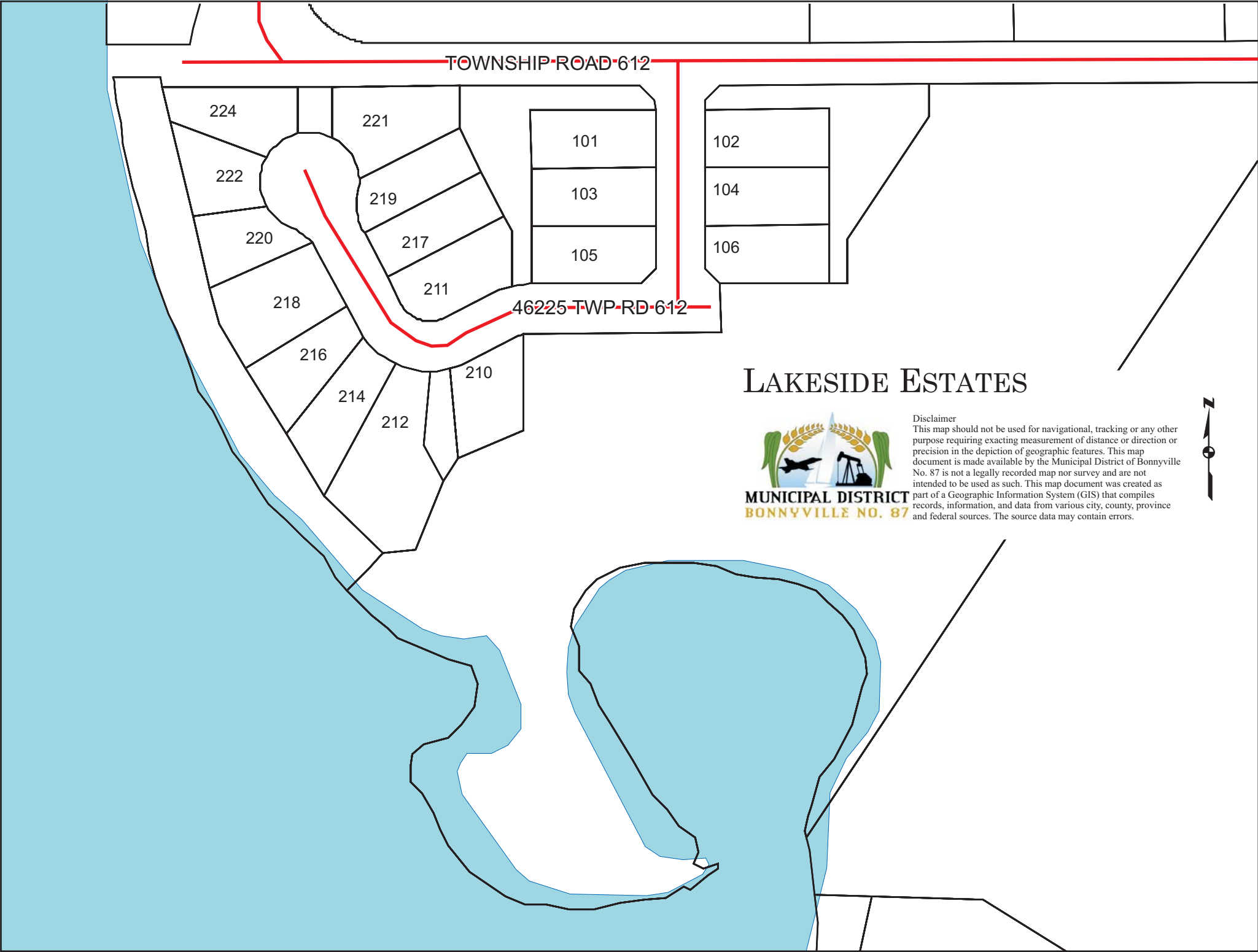
HILLSIDE ESTATES



**MUNICIPAL DISTRICT
BONNYVILLE NO. 87**

Disclaimer
This map should not be used for navigational, tracking or any other purpose requiring exacting measurement of distance or direction or precision in the depiction of geographic features. This map document is made available by the Municipal District of Bonnyville No. 87 is not a legally recorded map nor survey and are not intended to be used as such. This map document was created as part of a Geographic Information System (GIS) that compiles records, information, and data from various city, county, province and federal sources. The source data may contain errors.





TOWNSHIP ROAD 612

46225-TWP-RD-612

LAKESIDE ESTATES

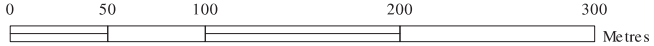


MUNICIPAL DISTRICT
BONNYVILLE NO. 87

Disclaimer
This map should not be used for navigational, tracking or any other purpose requiring exacting measurement of distance or direction or precision in the depiction of geographic features. This map document is made available by the Municipal District of Bonnyville No. 87 is not a legally recorded map nor survey and are not intended to be used as such. This map document was created as part of a Geographic Information System (GIS) that compiles records, information, and data from various city, county, province and federal sources. The source data may contain errors.

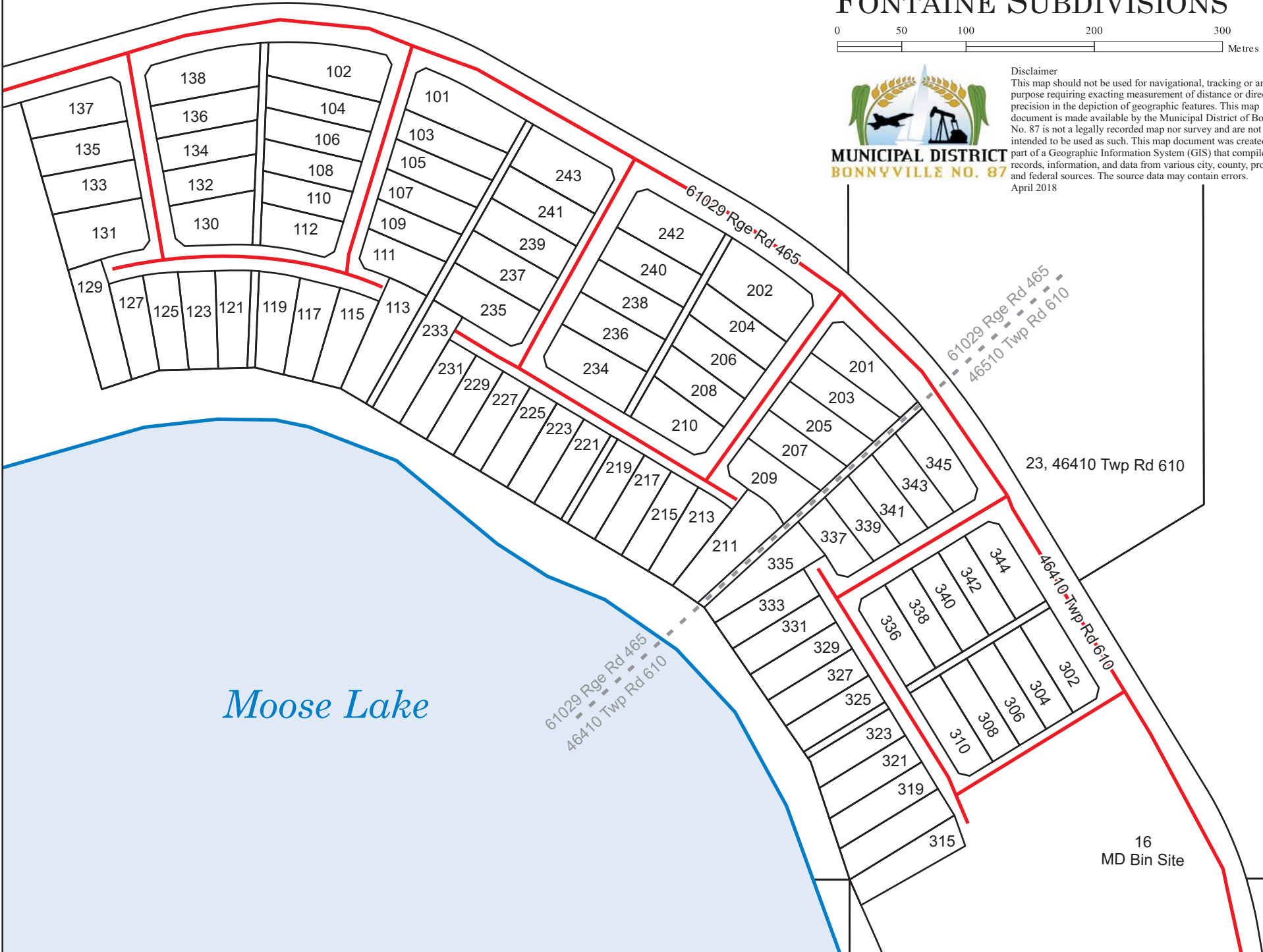


MODEL DEVELOPMENTS AND FONTAINE SUBDIVISIONS



**MUNICIPAL DISTRICT
BONNYVILLE NO. 87**

Disclaimer
This map should not be used for navigational, tracking or any other purpose requiring exacting measurement of distance or direction or precision in the depiction of geographic features. This map document is made available by the Municipal District of Bonnyville No. 87 is not a legally recorded map nor survey and are not intended to be used as such. This map document was created as part of a Geographic Information System (GIS) that compiles records, information, and data from various city, county, province and federal sources. The source data may contain errors.
April 2018



Moose Lake

16
MD Bin Site

MOOSE LAKE ESTATES SUBDIVISION

0 50 100 200 Metres



MUNICIPAL DISTRICT
BONNYVILLE NO. 87

Disclaimer
This map should not be used for navigational, tracking or any other purpose requiring exacting measurement of distance or direction or precision in the depiction of geographic features. This map document is made available by the Municipal District of Bonnyville No. 87 is not a legally recorded map nor survey and are not intended to be used as such. This map document was created as part of a Geographic Information System (GIS) that compiles records, information, and data from various city, county, province and federal sources. The source data may contain errors.



2

4

61223-Rge-Rd-470

3

10

13

12

15

14

17

16

19

18

21

20

23

61217 Rge Rd 470

27

29

31

33

35

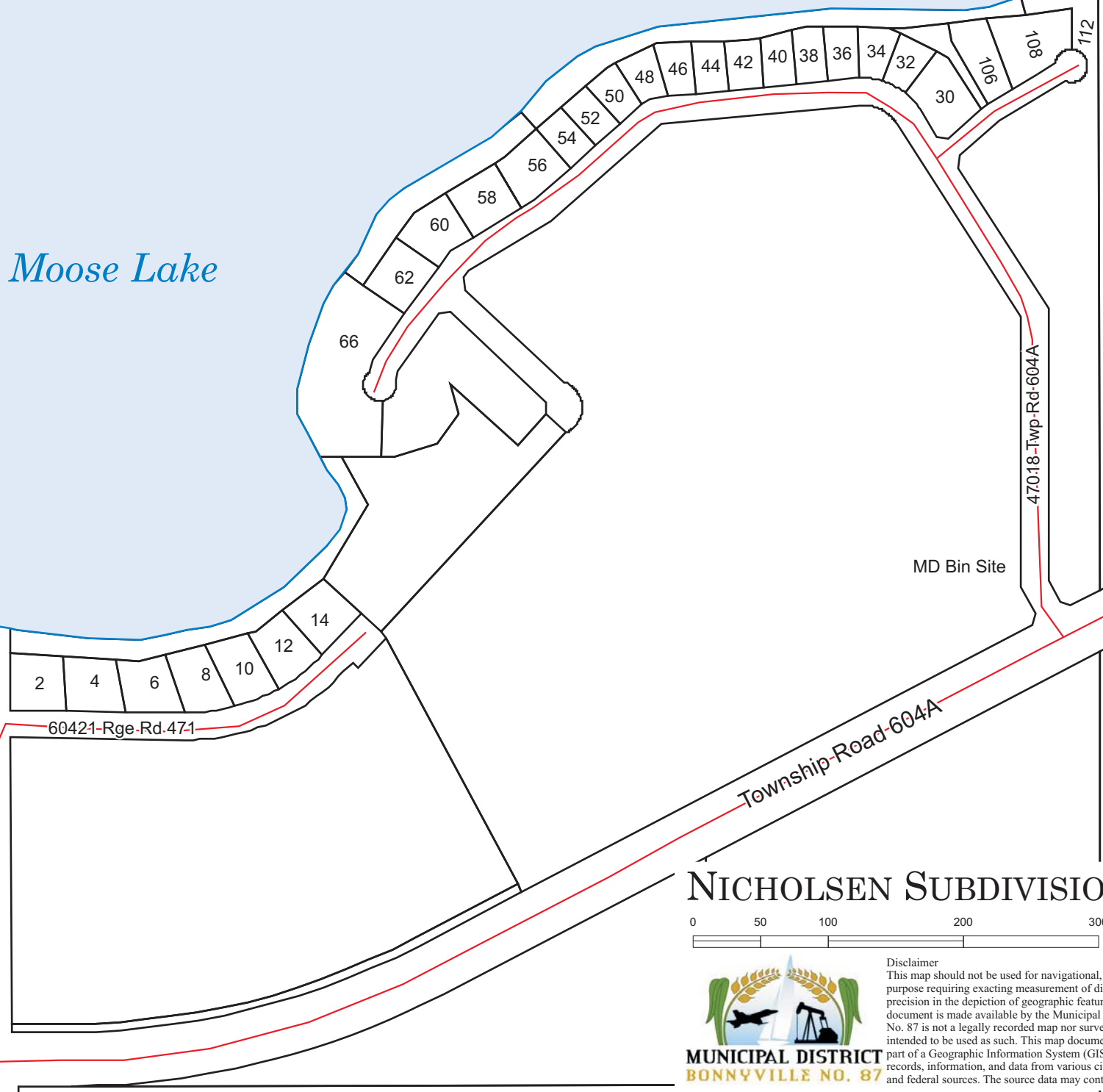
37

39

Range-Road-470

Moose Lake

Moose Lake



MD Bin Site

NICHOLSEN SUBDIVISION



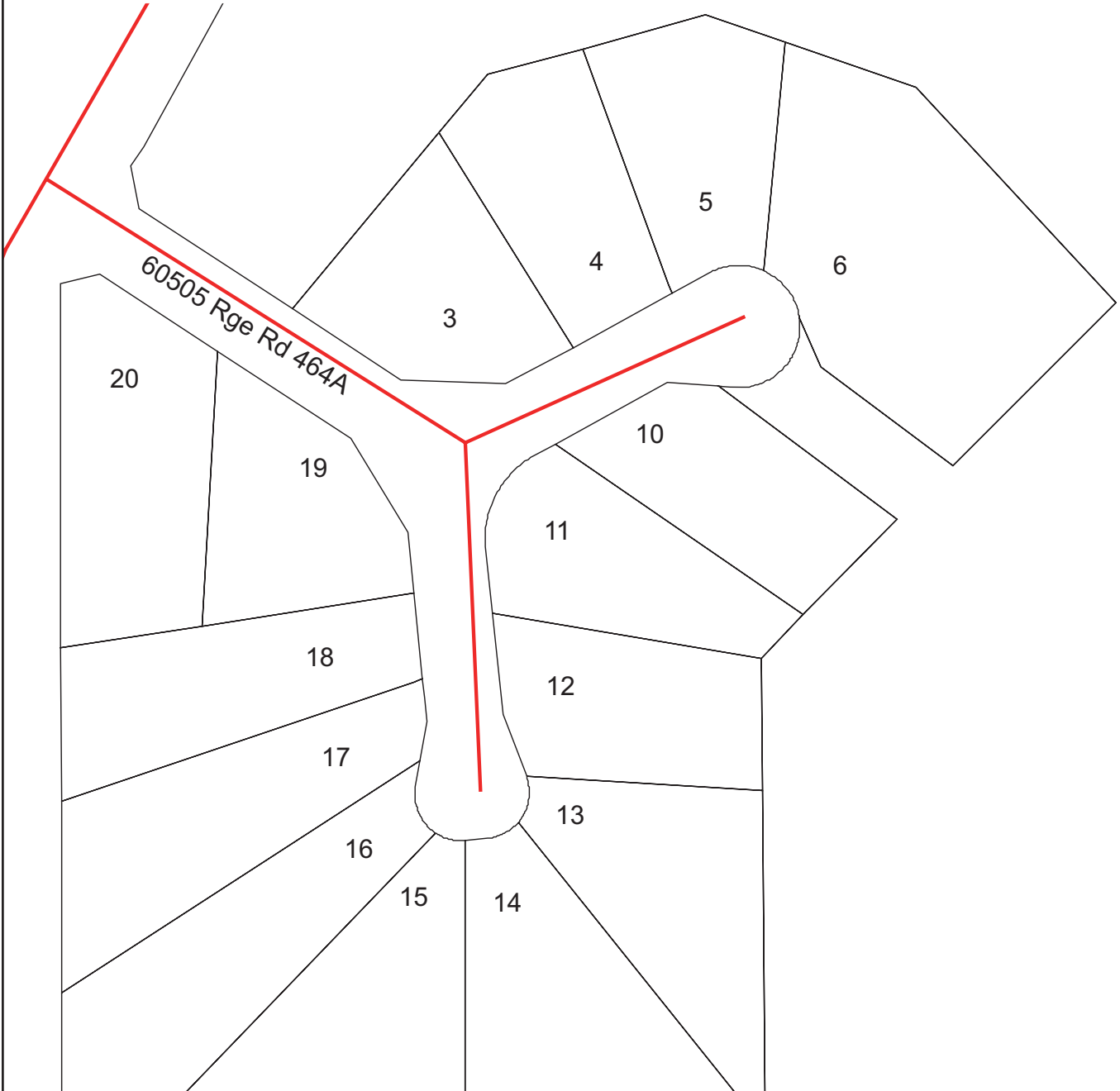
Disclaimer
This map should not be used for navigational, tracking or any other purpose requiring exacting measurement of distance or direction or precision in the depiction of geographic features. This map document is made available by the Municipal District of Bonnyville No. 87 is not a legally recorded map nor survey and are not intended to be used as such. This map document was created as part of a Geographic Information System (GIS) that compiles records, information, and data from various city, county, province and federal sources. The source data may contain errors.



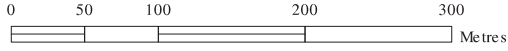
ROY SUBDIVISION



Disclaimer
This map should not be used for navigational, tracking or any other purpose requiring exacting measurement of distance or direction or precision in the depiction of geographic features. This map document is made available by the Municipal District of Bonnyville No. 87 is not a legally recorded map nor survey and are not intended to be used as such. This map document was created as part of a Geographic Information System (GIS) that compiles records, information, and data from various city, county, province and federal sources. The source data may contain errors.



NORTHSHORE HEIGHTS AND SHAYCHO BAY SUBDIVISIONS

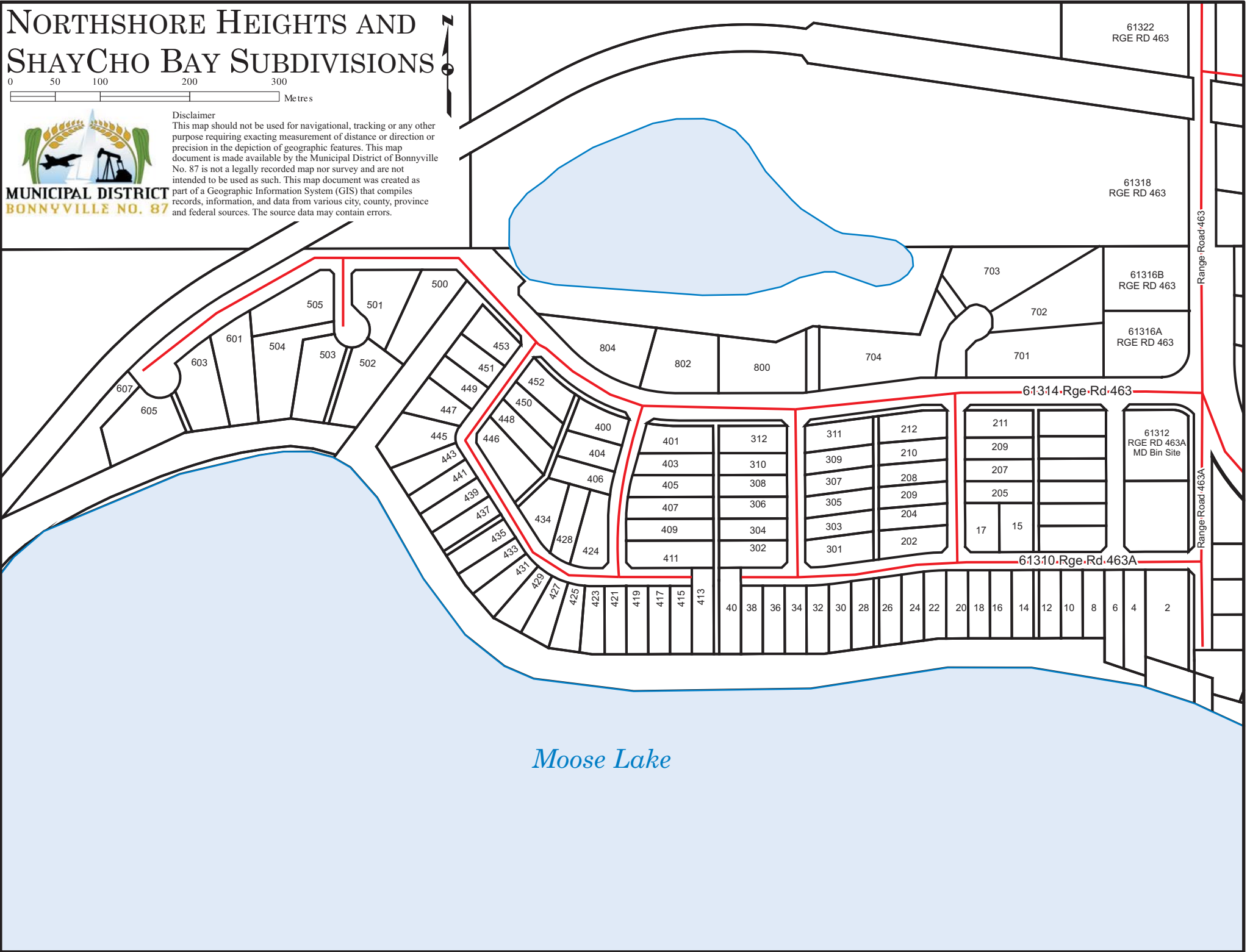


Disclaimer

This map should not be used for navigational, tracking or any other purpose requiring exacting measurement of distance or direction or precision in the depiction of geographic features. This map document is made available by the Municipal District of Bonnyville No. 87 is not a legally recorded map nor survey and are not intended to be used as such. This map document was created as part of a Geographic Information System (GIS) that compiles records, information, and data from various city, county, province and federal sources. The source data may contain errors.



**MUNICIPAL DISTRICT
BONNYVILLE NO. 87**



TOWNSHIP ROAD 612

RANGE ROAD 464

232

228

227

226

223

224

221

222

219

220

218

215

216

213

214

211

212

209

210

207

208

206

201

205

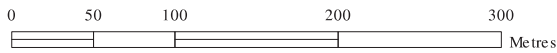
202

204

203

61421RGE RD 464

SILVER RIDGE ESTATES SUBDIVISIONS



MUNICIPAL DISTRICT
BONNYVILLE NO. 87

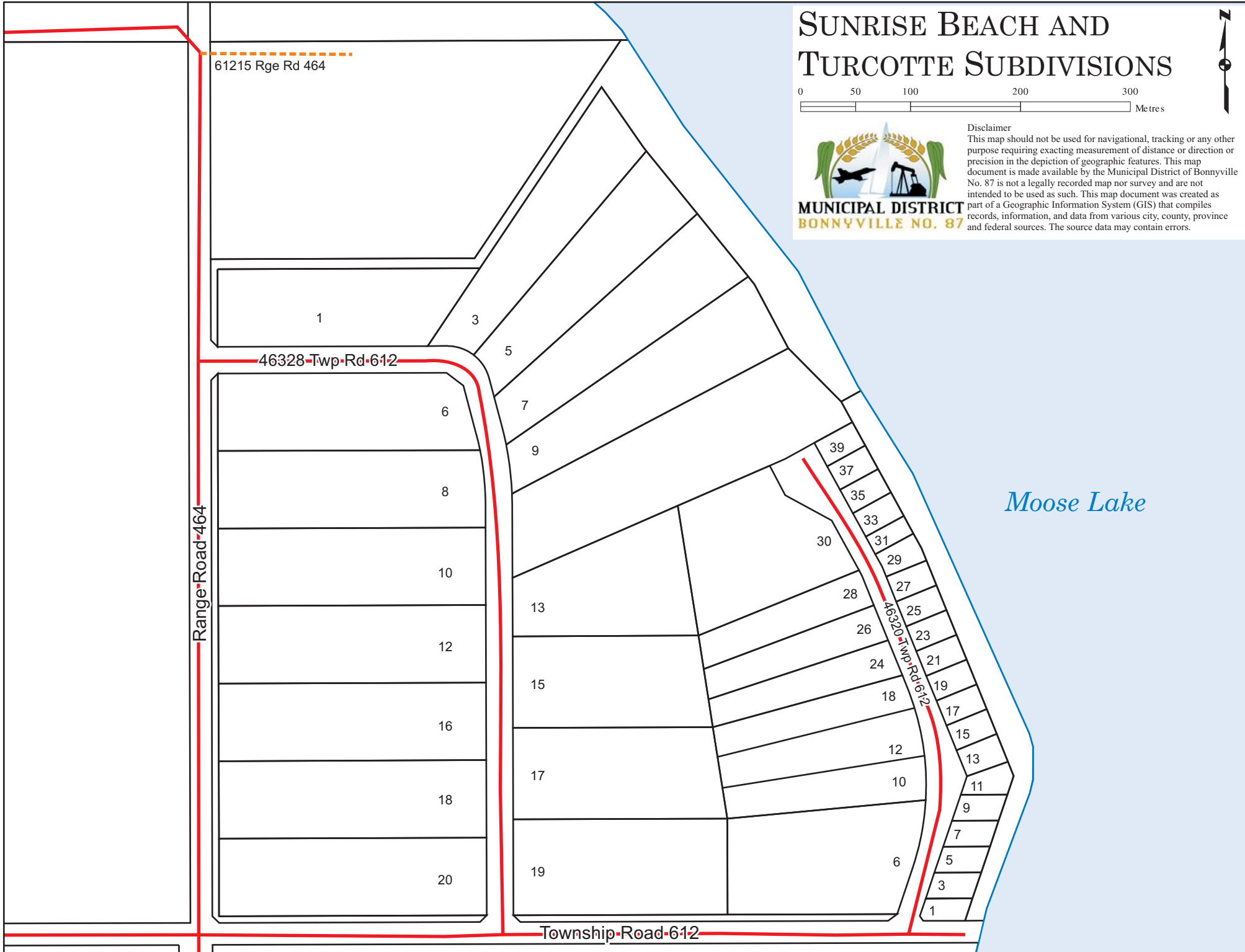
Disclaimer
This map should not be used for navigational, tracking or any other purpose requiring exacting measurement of distance or direction or precision in the depiction of geographic features. This map document is made available by the Municipal District of Bonnyville No. 87 is not a legally recorded map nor survey and are not intended to be used as such. This map document was created as part of a Geographic Information System (GIS) that compiles records, information, and data from various city, county, province and federal sources. The source data may contain errors.

SUNRISE BEACH AND TURCOTTE SUBDIVISIONS



**MUNICIPAL DISTRICT
BONNYVILLE NO. 87**

Disclaimer
This map should not be used for navigational, tracking or any other purpose requiring exacting measurement of distance or direction or precision in the depiction of geographic features. This map document is made available by the Municipal District of Bonnyville No. 87 is not a legally recorded map nor survey and are not intended to be used as such. This map document was created as part of a Geographic Information System (GIS) that compiles records, information, and data from various city, county, province and federal sources. The source data may contain errors.



MOOSE LAKE SUNSET VIEW

0 50 100 200 Metres



**MUNICIPAL DISTRICT
BONNYVILLE NO. 87**

Disclaimer
This map should not be used for navigational, tracking or any other purpose requiring exacting measurement of distance or direction or precision in the depiction of geographic features. This map document is made available by the Municipal District of Bonnyville No. 87 is not a legally recorded map nor survey and are not intended to be used as such. This map document was created as part of a Geographic Information System (GIS) that compiles records, information, and data from various city, county, province and federal sources. The source data may contain errors.



Township Road 610

60528-Rge-Rd-464A

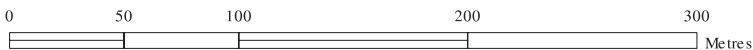
Range Road 464A

60528-Rge-Rd-464A

Moose Lake

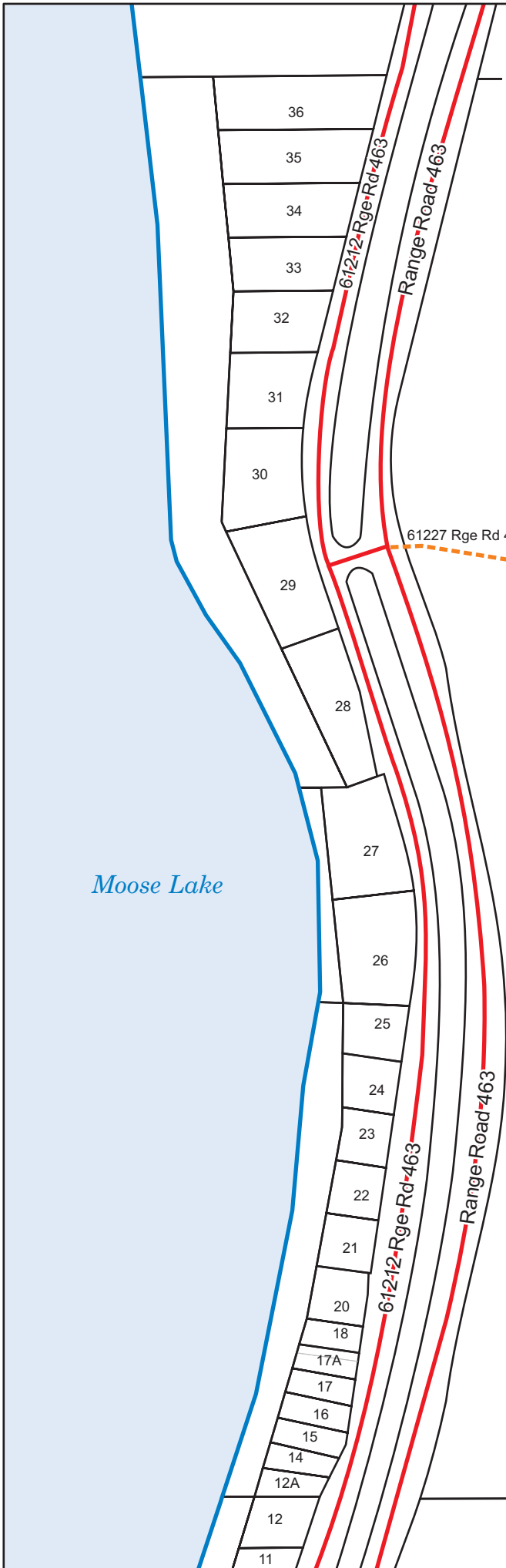


SUNSET BEACH SUBDIVISION- NORTH



MUNICIPAL DISTRICT
BONNYVILLE NO. 87

Disclaimer
This map should not be used for navigational, tracking or any other purpose requiring exacting measurement of distance or direction or precision in the depiction of geographic features. This map document is made available by the Municipal District of Bonnyville No. 87 is not a legally recorded map nor survey and are not intended to be used as such. This map document was created as part of a Geographic Information System (GIS) that compiles records, information, and data from various city, county, province and federal sources. The source data may contain errors.



Moose Lake

Moose Lake

61215 Rge Rd 463

14

13

12A

12

11

10

9

8

7

6

5

4

3

2

1

61210
Rge Rd 463

61208B
Rge Rd 463

61208A
Rge Rd 463

61204B
Rge Rd 463

61204A
Rge Rd 463

61202B
Rge Rd 463

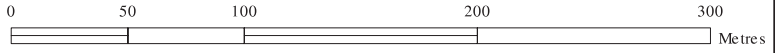
61202A
Rge Rd 463

61212 Rge Rd 463

Range Road 463

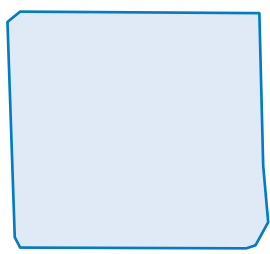
Range Road 463

SUNSET BEACH - SOUTH AND NORGLASS-LYSOCHUK SUBDIVISIONS



MUNICIPAL DISTRICT
BONNYVILLE NO. 87

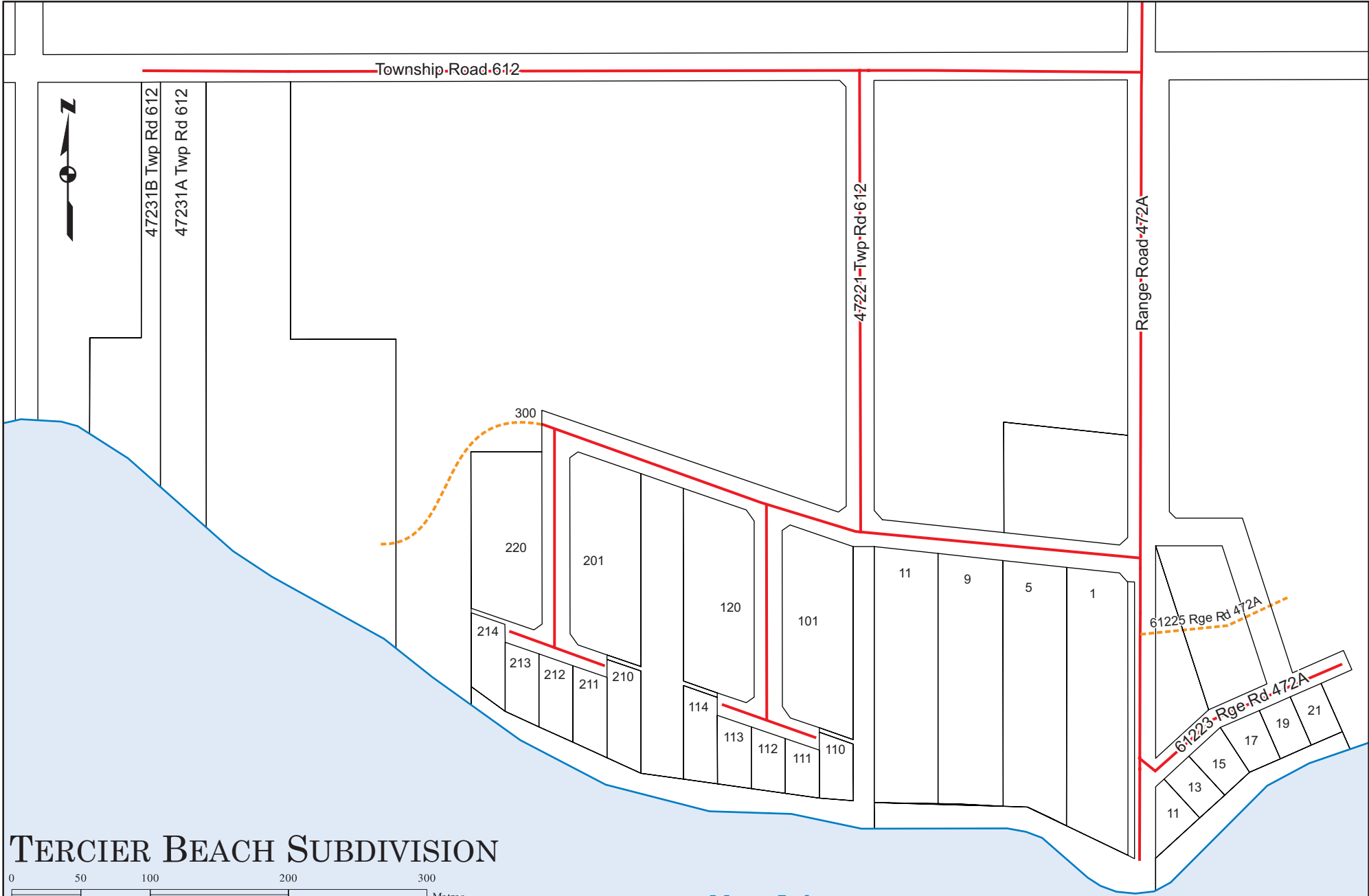
Disclaimer
This map should not be used for navigational, tracking or any other purpose requiring exacting measurement of distance or direction or precision in the depiction of geographic features. This map document is made available by the Municipal District of Bonnyville No. 87 is not a legally recorded map nor survey and are not intended to be used as such. This map document was created as part of a Geographic Information System (GIS) that compiles records, information, and data from various city, county, province and federal sources. The source data may contain errors.



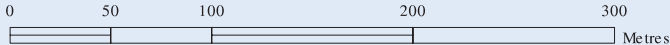
46228 Twp Rd 612

46218B Twp Rd 612

Township Road 612



TERCIER BEACH SUBDIVISION



Moose Lake



Disclaimer
 This map should not be used for navigational, tracking or any other purpose requiring exacting measurement of distance or direction or precision in the depiction of geographic features. This map document is made available by the Municipal District of Bonnyville No. 87 is not a legally recorded map nor survey and are not intended to be used as such. This map document was created as part of a Geographic Information System (GIS) that compiles records, information, and data from various city, county, province and federal sources. The source data may contain errors.

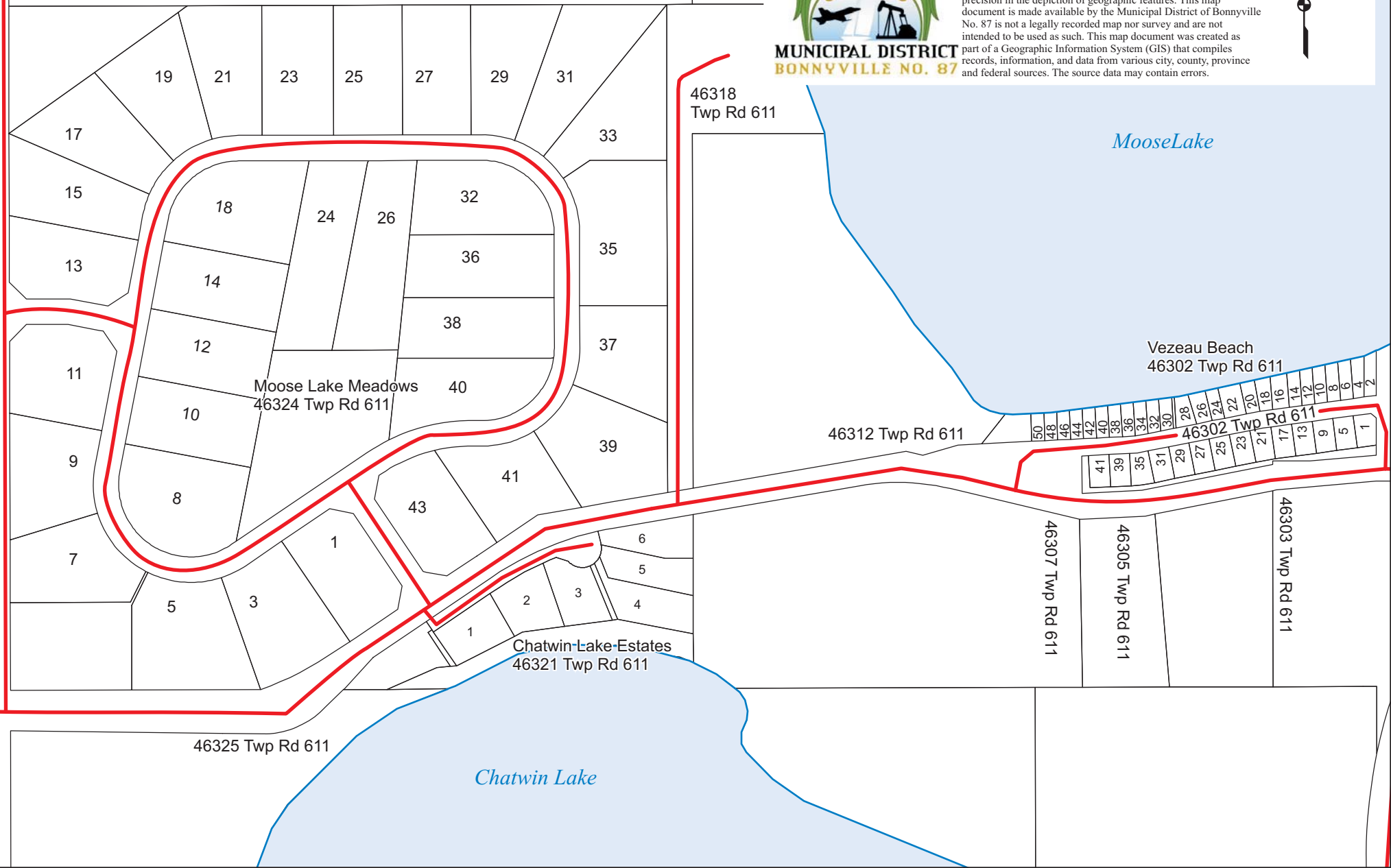
MOOSE LAKE MEADOWS, CHATWIN LAKE ESTATES, AND VESEAU BEACH

0 50 100 200 300 400 Metres



**MUNICIPAL DISTRICT
BONNYVILLE NO. 87**

Disclaimer
This map should not be used for navigational, tracking or any other purpose requiring exacting measurement of distance or direction or precision in the depiction of geographic features. This map document is made available by the Municipal District of Bonnyville No. 87 is not a legally recorded map nor survey and are not intended to be used as such. This map document was created as part of a Geographic Information System (GIS) that compiles records, information, and data from various city, county, province and federal sources. The source data may contain errors.



Moose Lake Meadows
46324 Twp Rd 611

Chatwin Lake Estates
46321 Twp Rd 611

MooseLake

Vezeau Beach
46302 Twp Rd 611

46325 Twp Rd 611

Chatwin Lake

46312 Twp Rd 611

46307 Twp Rd 611

46305 Twp Rd 611

46303 Twp Rd 611



Moose Lake

52 50 48 46 44 42 40 38 36 34 32 30 28 26 24 22 20 18 16 12 10 8 6 4 2

46302-Twp-Rd-611

41 39 35 31 29 27 25 23 21 17 13 9 5 1

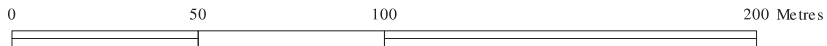
Township-Road-611

46307 Twp Rd 611

46305 Twp Rd 611

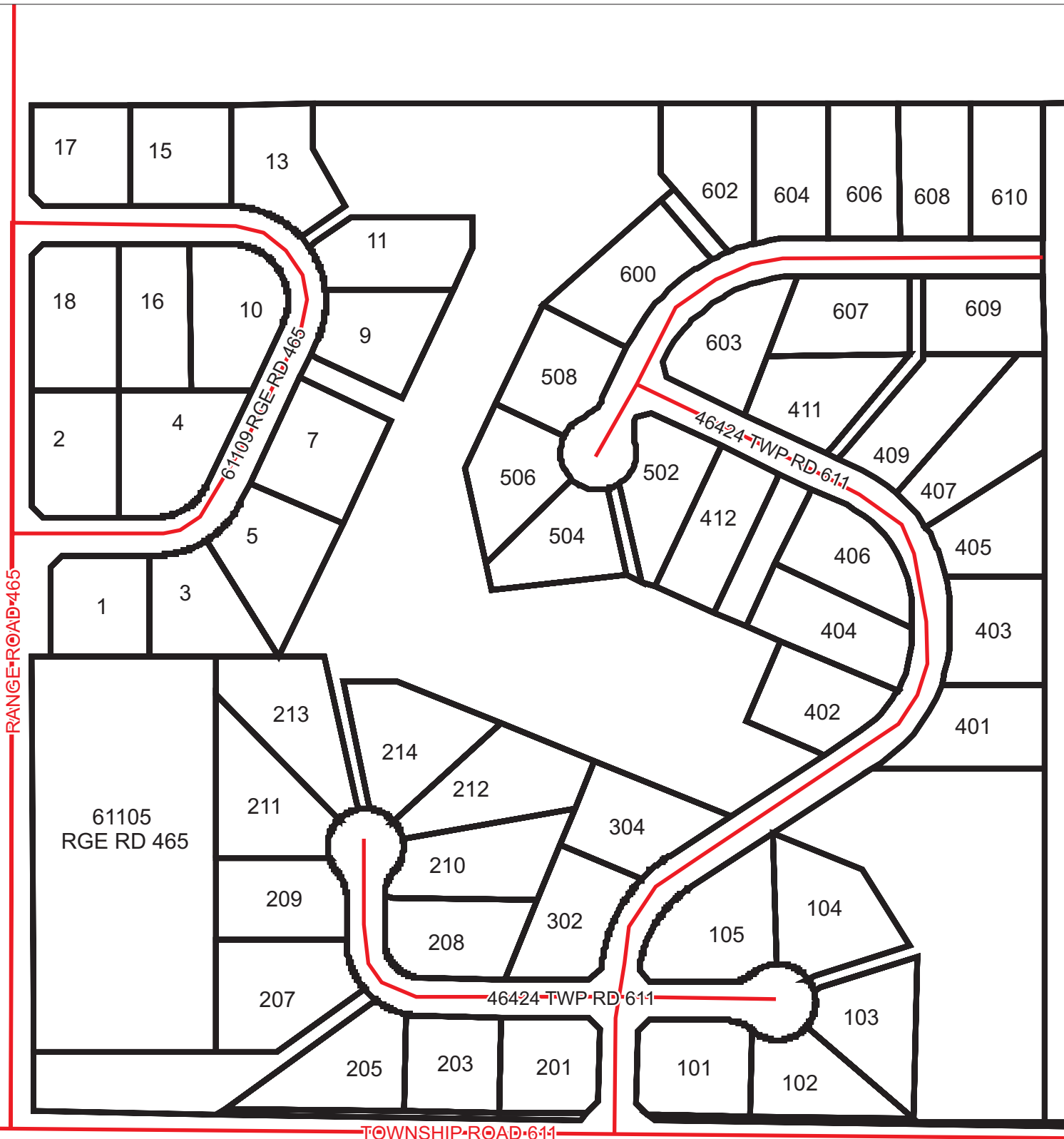
46303 Twp Rd 611
Bonnyville Golf & Country Club

VEZEAU BEACH SUBDIVISION

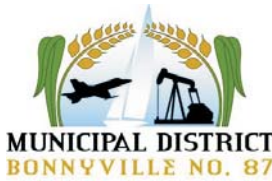


MUNICIPAL DISTRICT
BONNYVILLE NO. 87

Disclaimer
This map should not be used for navigational, tracking or any other purpose requiring exacting measurement of distance or direction or precision in the depiction of geographic features. This map document is made available by the Municipal District of Bonnyville No. 87 is not a legally recorded map nor survey and are not intended to be used as such. This map document was created as part of a Geographic Information System (GIS) that compiles records, information, and data from various city, county, province and federal sources. The source data may contain errors.



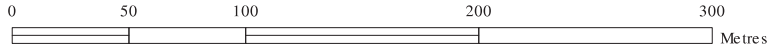
WILLOW RIDGE ESTATES



Disclaimer
 This map should not be used for navigational, tracking or any other purpose requiring exacting measurement of distance or direction or precision in the depiction of geographic features. This map document is made available by the Municipal District of Bonnyville No. 87 is not a legally recorded map nor survey and are not intended to be used as such. This map document was created as part of a Geographic Information System (GIS) that compiles records, information, and data from various city, county, province and federal sources. The source data may contain errors.



WOOD CREEK RV PARK & WOOD CREEK ESTATES



Disclaimer
This map should not be used for navigational, tracking or any other purpose requiring exacting measurement of distance or direction or precision in the depiction of geographic features. This map document is made available by the Municipal District of Bonnyville No. 87 is not a legally recorded map nor survey and are not intended to be used as such. This map document was created as part of a Geographic Information System (GIS) that compiles records, information, and data from various city, county, province and federal sources. The source data may contain errors.

