

Moose Lake

Evergreen Estates

Moose Lake Estates

Eagles Nest

Birch Grove

Turcotte Subdivision

Sunset Beach

Norglass/
Lysóchuk Subdivision

Lakeside Village

Tercier Beach

Elk Haven Ph.1

Elk Haven Ph.2

Hillside Estates

Silver Ridge

Pelican Narrows SV

Willow Ridge Estates

Moose Lake Meadows

Vezeau Beach

Chateau Estates

Model Development

Chatwin Lake Estates

Fontaine Subdivision

Drouin Subdivision

Sunset View

Bonnyville Beach SV

Roy Subdivision

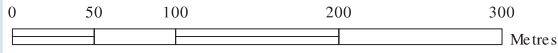
Ferby Subdivision

Nicholson Subdivision

46526
TWP RD 604A

Wood Creek

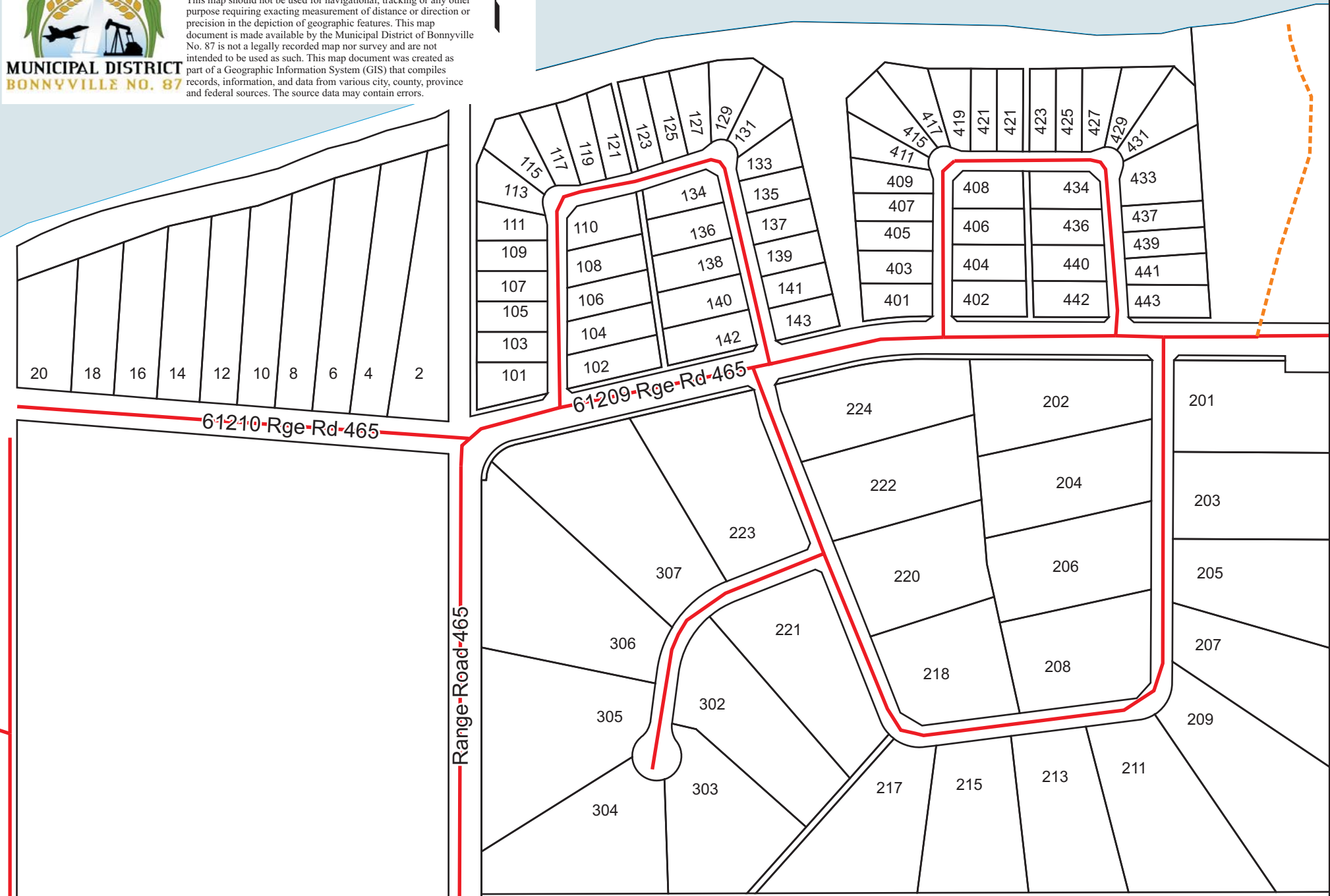
BIRCH GROVE AND EAGLE'S NEST SUBDIVISIONS



**MUNICIPAL DISTRICT
BONNYVILLE NO. 87**

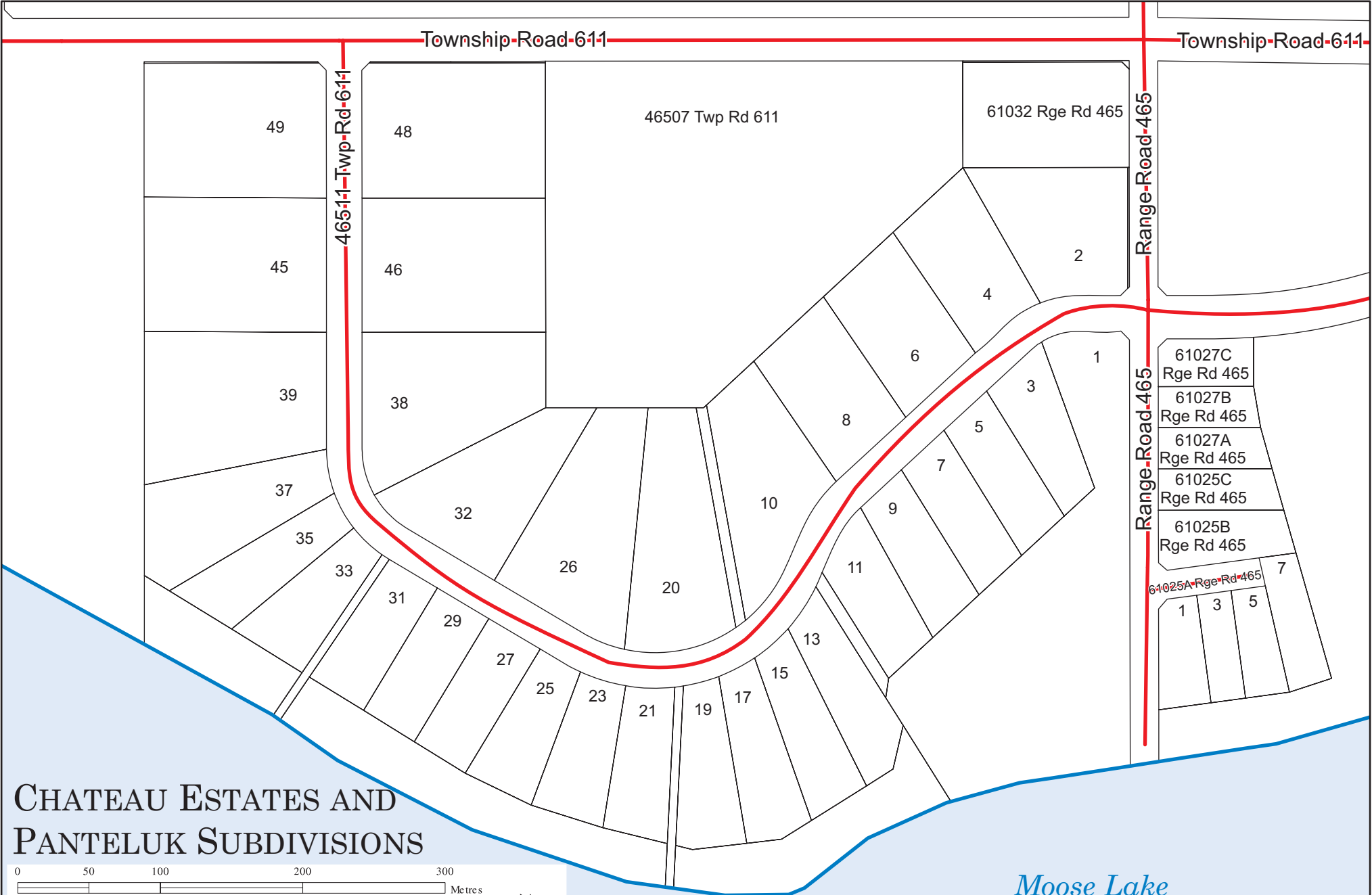
Disclaimer
This map should not be used for navigational, tracking or any other purpose requiring exacting measurement of distance or direction or precision in the depiction of geographic features. This map document is made available by the Municipal District of Bonnyville No. 87 is not a legally recorded map nor survey and are not intended to be used as such. This map document was created as part of a Geographic Information System (GIS) that compiles records, information, and data from various city, county, province and federal sources. The source data may contain errors.

Moose Lake

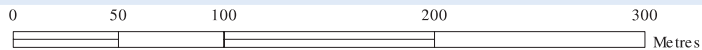


Township-Road-611

Township-Road-611



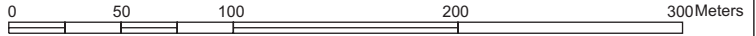
CHATEAU ESTATES AND PANTELUK SUBDIVISIONS



Disclaimer
 This map should not be used for navigational, tracking or any other purpose requiring exacting measurement of distance or direction or precision in the depiction of geographic features. This map document is made available by the Municipal District of Bonnyville No. 87 is not a legally recorded map nor survey and are not intended to be used as such. This map document was created as part of a Geographic Information System (GIS) that compiles records, information, and data from various city, county, province and federal sources. The source data may contain errors.

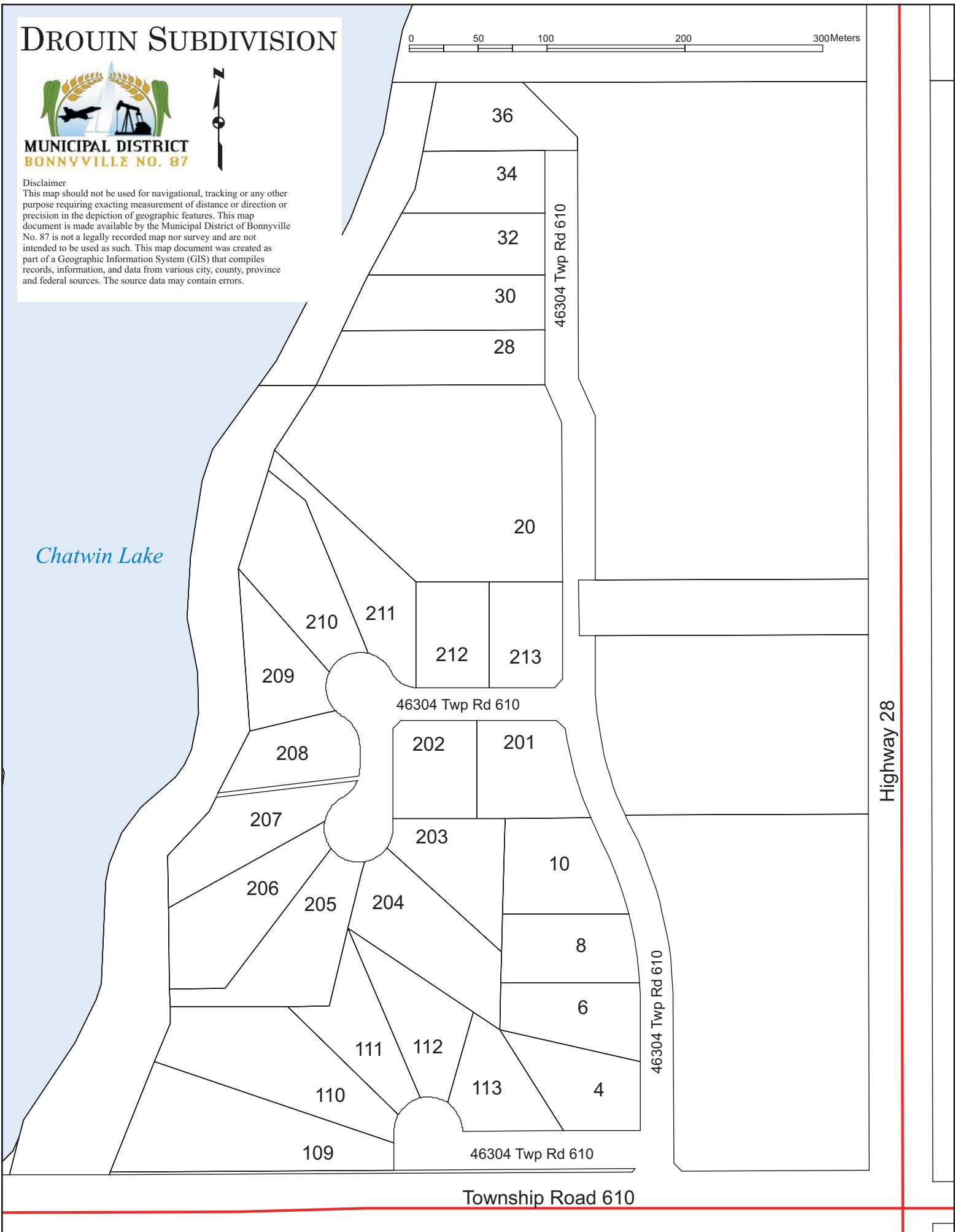
Moose Lake

DROUIN SUBDIVISION

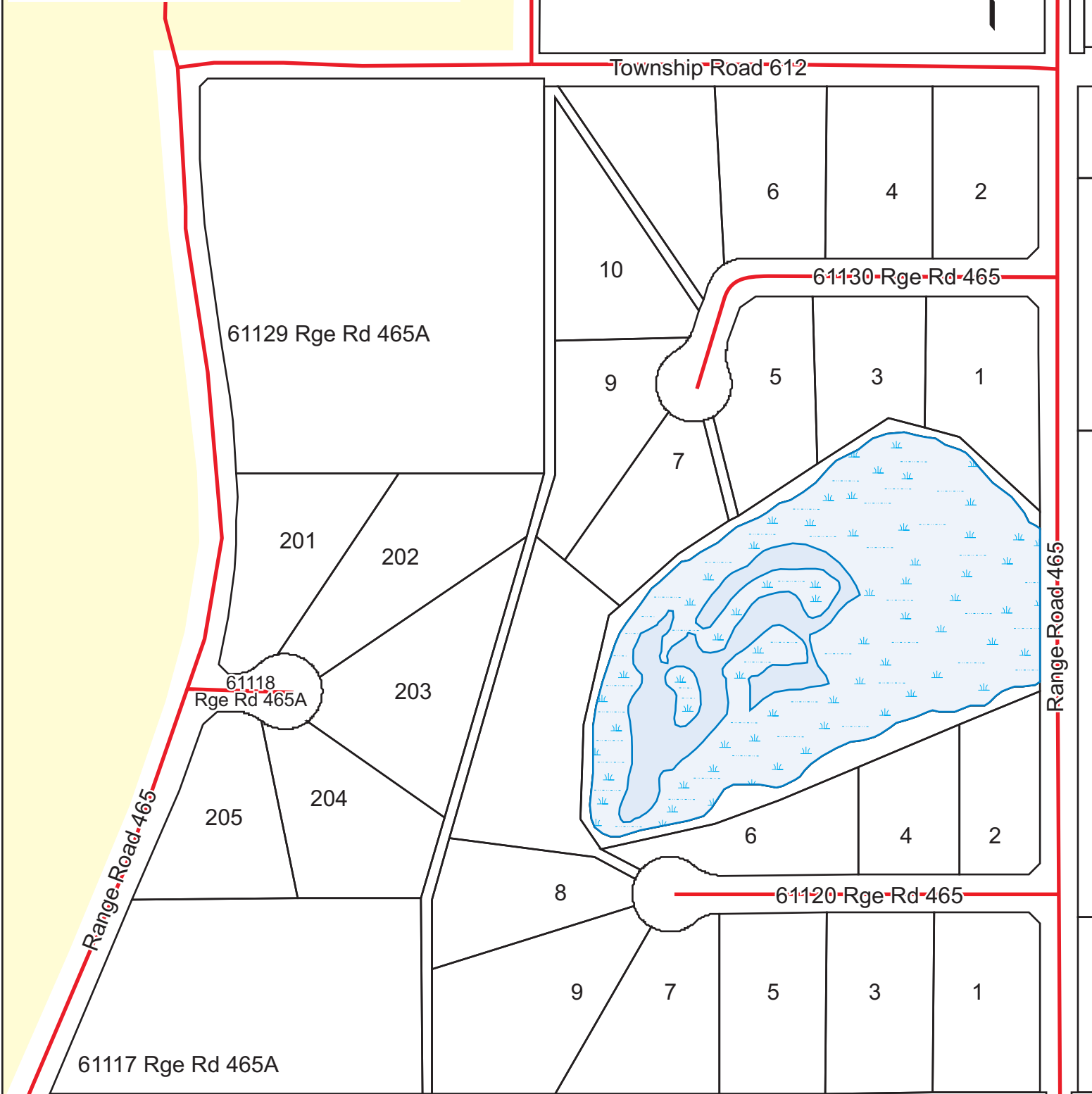


Disclaimer
This map should not be used for navigational, tracking or any other purpose requiring exacting measurement of distance or direction or precision in the depiction of geographic features. This map document is made available by the Municipal District of Bonnyville No. 87 is not a legally recorded map nor survey and are not intended to be used as such. This map document was created as part of a Geographic Information System (GIS) that compiles records, information, and data from various city, county, province and federal sources. The source data may contain errors.

Chatwin Lake



ELK HAVEN SUBDIVISION



DISCLAIMER
This map should not be used for navigational, tracking or any other purpose requiring exacting measurement of distance or direction or precision in the depiction of geographic features. This map document is made available by the Municipal District of Bonnyville No. 87 is not a legally recorded map nor survey and are not intended to be used as such. This map document was created as part of a Geographic Information System (GIS) that compiles records, information, and data from various city, county, province and federal sources. The source data may contain errors.

MUNICIPAL DISTRICT
BONNYVILLE NO. 87

Highway 660

2

4

6

8

10

12

14

16

18

20

22

24

61307 Rge Rd 470

7

9

11

3

21

25

14

12

10

5

7

61303 Rge Rd 470

19

17

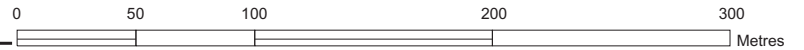
15

13

11

9

EVERGREEN ESTATES

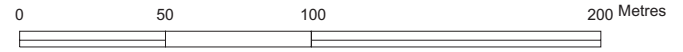


MUNICIPAL DISTRICT
BONNYVILLE NO. 87

Disclaimer
 This map should not be used for navigational, tracking or any other purpose requiring exacting measurement of distance or direction or precision in the depiction of geographic features. This map document is made available by the Municipal District of Bonnyville No. 87 is not a legally recorded map nor survey and are not intended to be used as such. This map document was created as part of a Geographic Information System (GIS) that compiles records, information, and data from various city, county, province and federal sources. The source data may contain errors.



FERBY SUBDIVISION



Disclaimer
This map should not be used for navigational, tracking or any other purpose requiring exacting measurement of distance or direction or precision in the depiction of geographic features. This map document is made available by the Municipal District of Bonnyville No. 87 is not a legally recorded map nor survey and are not intended to be used as such. This map document was created as part of a Geographic Information System (GIS) that compiles records, information, and data from various city, county, province and federal sources. The source data may contain errors.

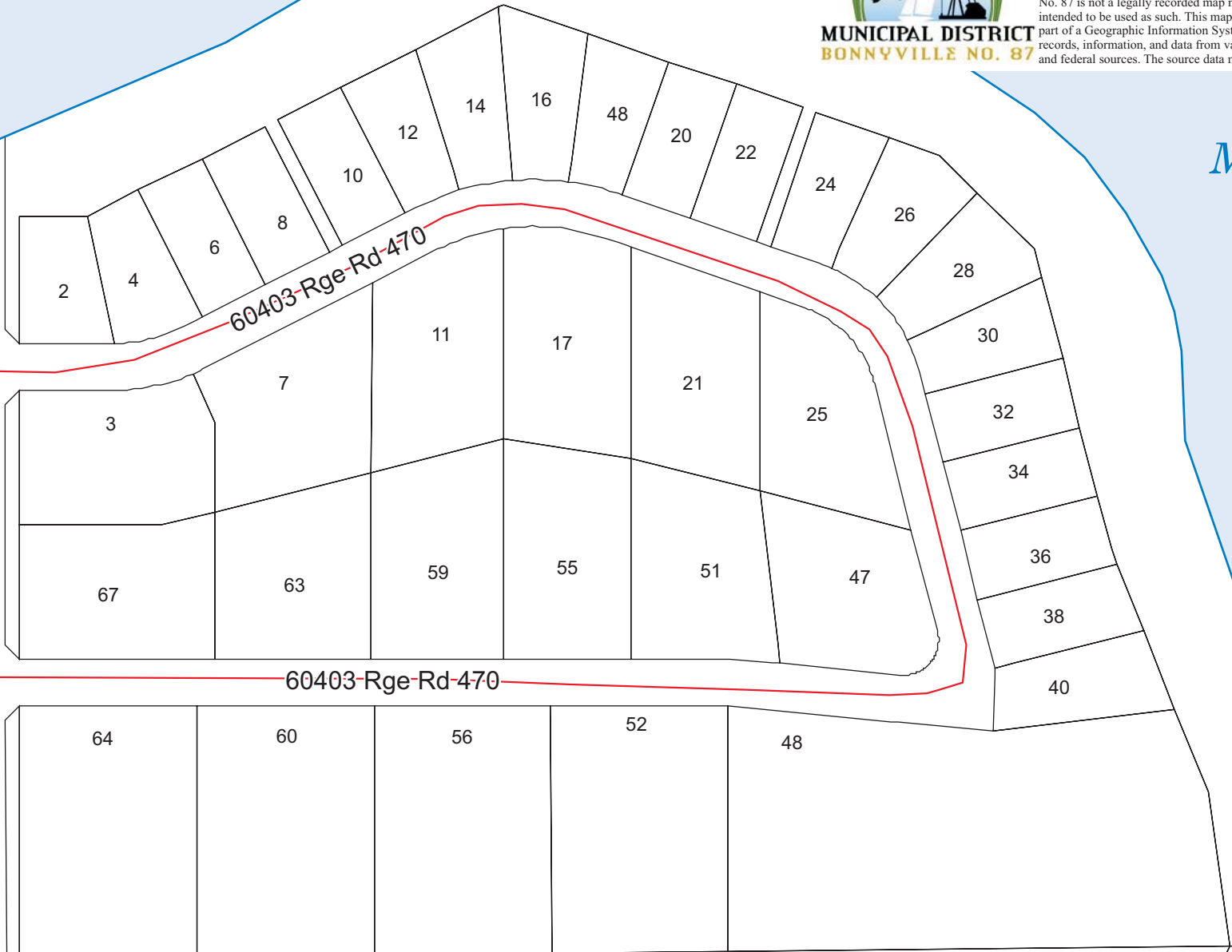


Moose Lake

Range-Road-470

60403-Rge-Rd-470

60403-Rge-Rd-470



Moose Lake

464-10-Twp-Rd-6-10

464-10-Twp-Rd-6-10

Township Road 600

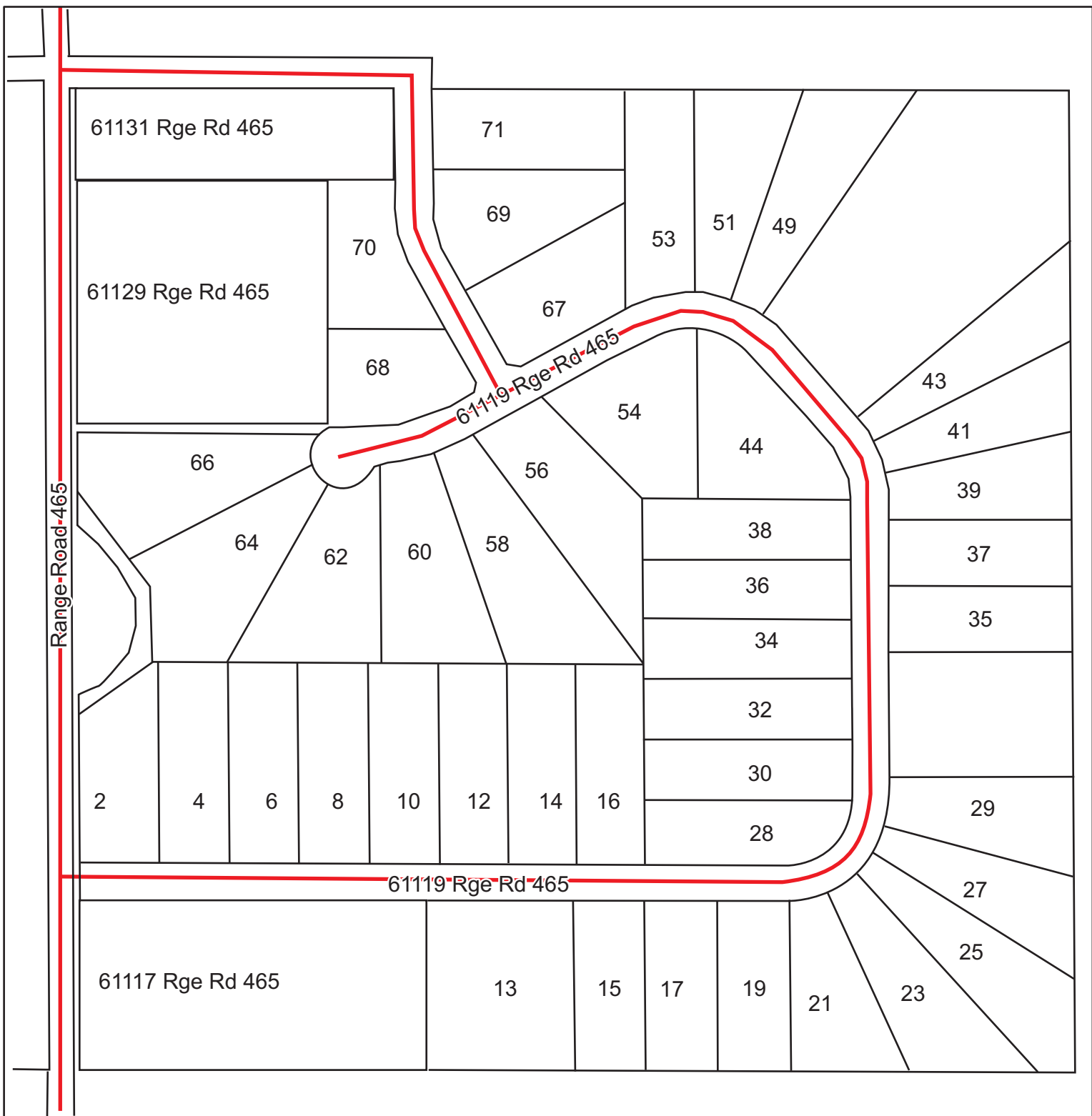
FONTAINE SUBDIVISION



DISCLAIMER
This map should not be used for navigational, tracking or any other purpose requiring exacting measurement of distance or direction or precision in the depiction of geographic features. This map document is made available by the Municipal District of Bonnyville No. 87 is not a legally recorded map nor survey and are not intended to be used as such. This map document was created as part of a Geographic Information System (GIS) that compiles records, information, and data from various city, county, province and federal sources. The source data may contain errors.



501



HILLSIDE ESTATES

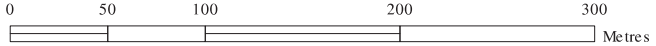


**MUNICIPAL DISTRICT
BONNYVILLE NO. 87**

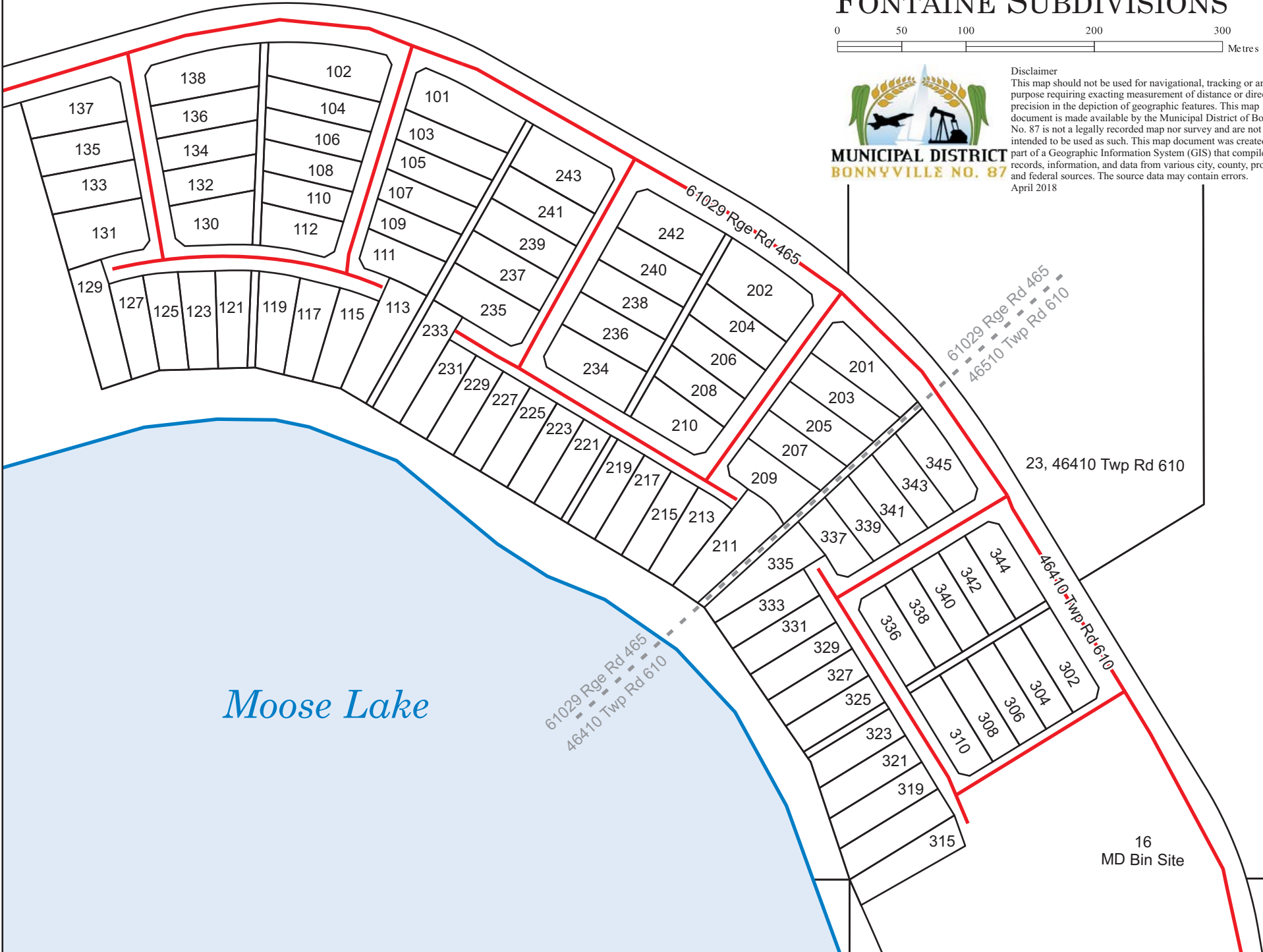
Disclaimer
 This map should not be used for navigational, tracking or any other purpose requiring exacting measurement of distance or direction or precision in the depiction of geographic features. This map document is made available by the Municipal District of Bonnyville No. 87 is not a legally recorded map nor survey and are not intended to be used as such. This map document was created as part of a Geographic Information System (GIS) that compiles records, information, and data from various city, county, province and federal sources. The source data may contain errors.



MODEL DEVELOPMENTS AND FONTAINE SUBDIVISIONS



Disclaimer
 This map should not be used for navigational, tracking or any other purpose requiring exacting measurement of distance or direction or precision in the depiction of geographic features. This map document is made available by the Municipal District of Bonnyville No. 87 is not a legally recorded map nor survey and are not intended to be used as such. This map document was created as part of a Geographic Information System (GIS) that compiles records, information, and data from various city, county, province and federal sources. The source data may contain errors.
 April 2018



Moose Lake

16
MD Bin Site

MOOSE LAKE ESTATES SUBDIVISION

0 50 100 200 Metres



**MUNICIPAL DISTRICT
BONNYVILLE NO. 87**

Disclaimer
This map should not be used for navigational, tracking or any other purpose requiring exacting measurement of distance or direction or precision in the depiction of geographic features. This map document is made available by the Municipal District of Bonnyville No. 87 is not a legally recorded map nor survey and are not intended to be used as such. This map document was created as part of a Geographic Information System (GIS) that compiles records, information, and data from various city, county, province and federal sources. The source data may contain errors.



2

4

61223-Rge-Rd-470

3

10

13

12

15

14

17

16

19

18

21

20

23

61217 Rge Rd 470

27

29

31

33

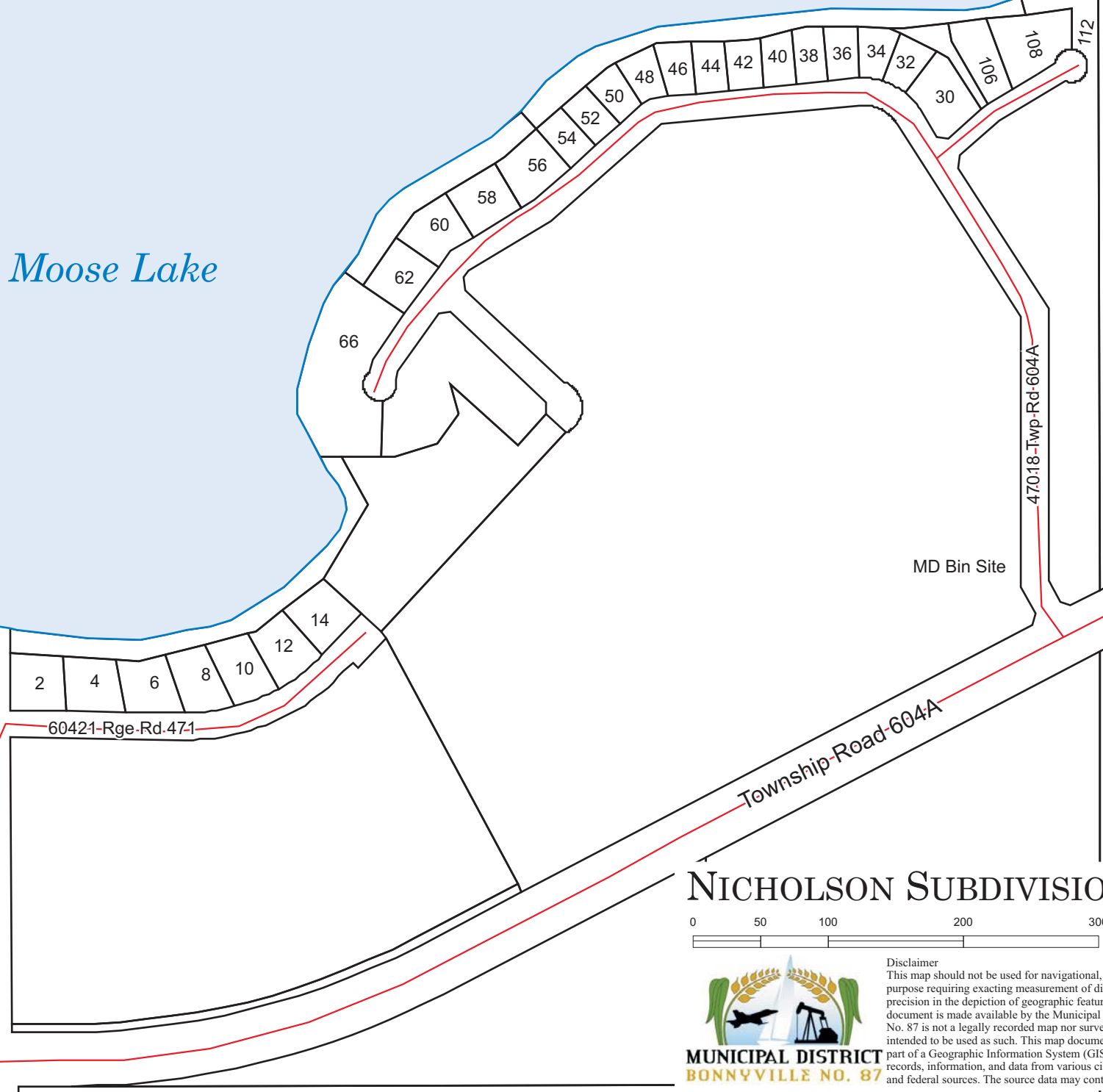
35

37

39

Moose Lake

Moose Lake



NICHOLSON SUBDIVISION



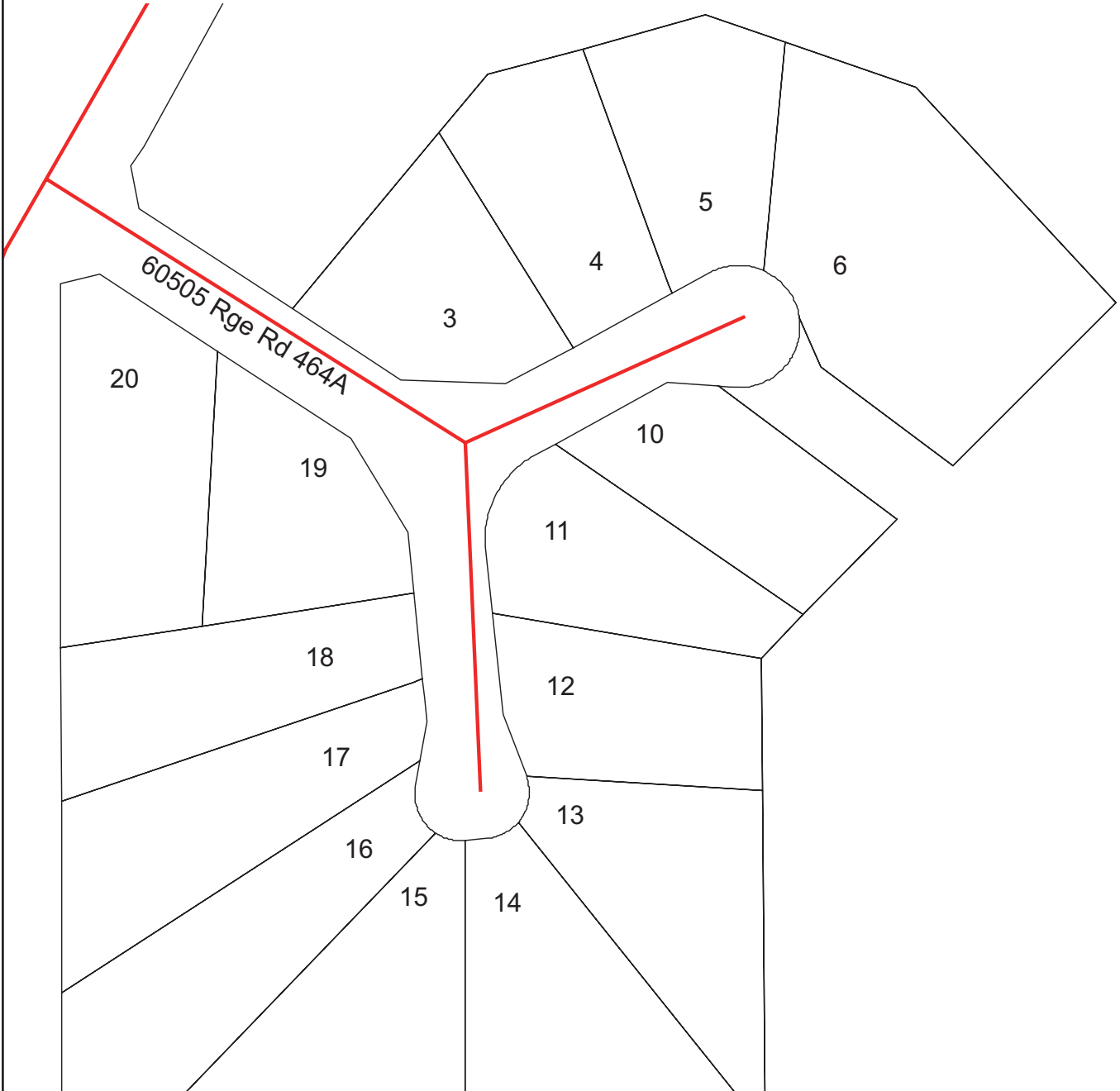
Disclaimer
This map should not be used for navigational, tracking or any other purpose requiring exacting measurement of distance or direction or precision in the depiction of geographic features. This map document is made available by the Municipal District of Bonnyville No. 87 is not a legally recorded map nor survey and are not intended to be used as such. This map document was created as part of a Geographic Information System (GIS) that compiles records, information, and data from various city, county, province and federal sources. The source data may contain errors.



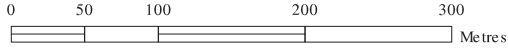
ROY SUBDIVISION



Disclaimer
This map should not be used for navigational, tracking or any other purpose requiring exacting measurement of distance or direction or precision in the depiction of geographic features. This map document is made available by the Municipal District of Bonnyville No. 87 is not a legally recorded map nor survey and are not intended to be used as such. This map document was created as part of a Geographic Information System (GIS) that compiles records, information, and data from various city, county, province and federal sources. The source data may contain errors.



NORTH SHORE HEIGHTS AND SHAYCHO BAY SUBDIVISIONS

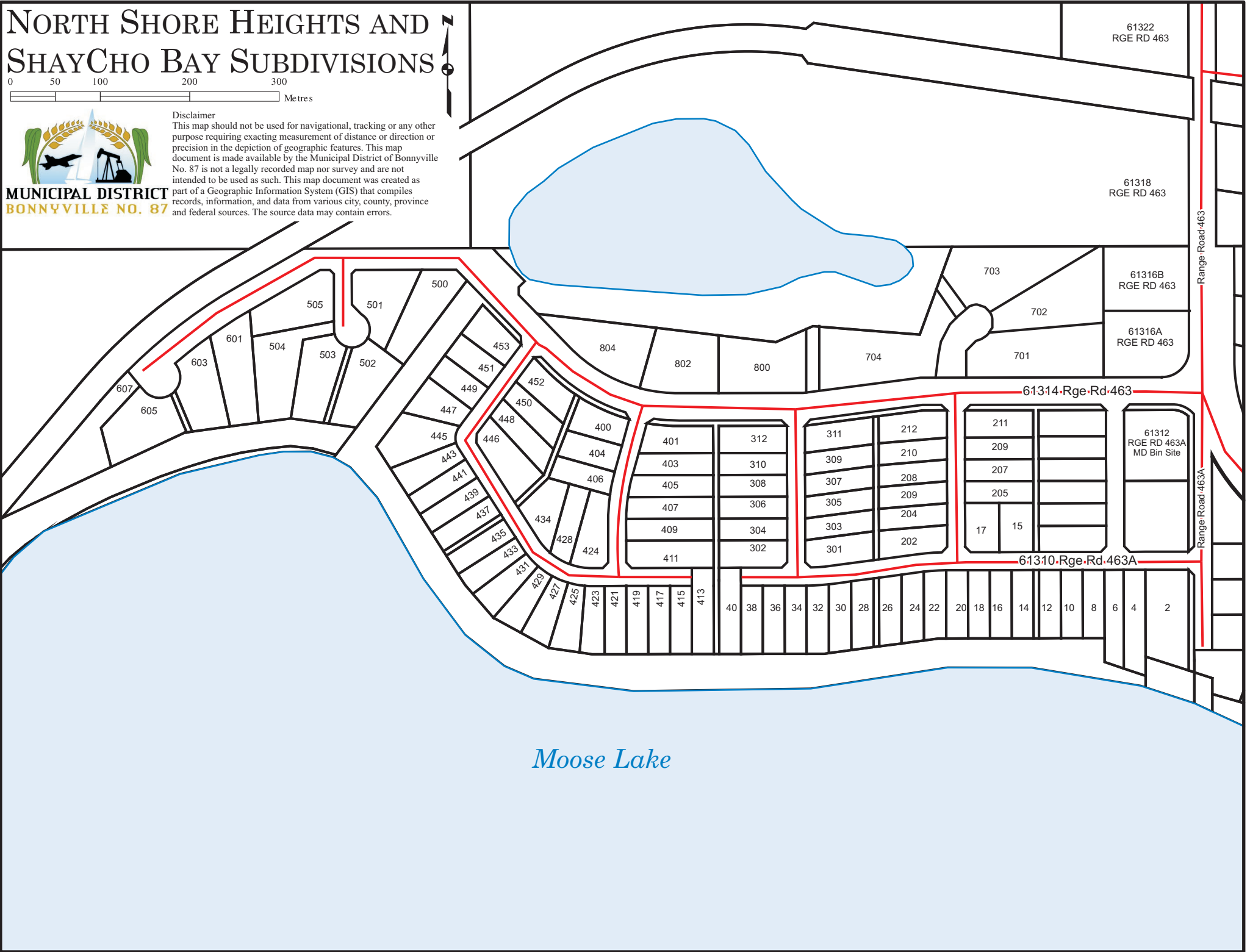


Disclaimer

This map should not be used for navigational, tracking or any other purpose requiring exacting measurement of distance or direction or precision in the depiction of geographic features. This map document is made available by the Municipal District of Bonnyville No. 87 is not a legally recorded map nor survey and are not intended to be used as such. This map document was created as part of a Geographic Information System (GIS) that compiles records, information, and data from various city, county, province and federal sources. The source data may contain errors.



**MUNICIPAL DISTRICT
BONNYVILLE NO. 87**



Moose Lake

TOWNSHIP ROAD 612

RANGE ROAD 464

232

228

227

226

223

224

221

222

219

220

218

215

216

213

214

211

212

209

210

207

208

206

205

201

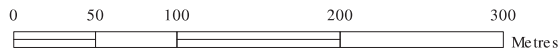
204

202

203

61421-RGE-RD-464

SILVER RIDGE ESTATES SUBDIVISIONS



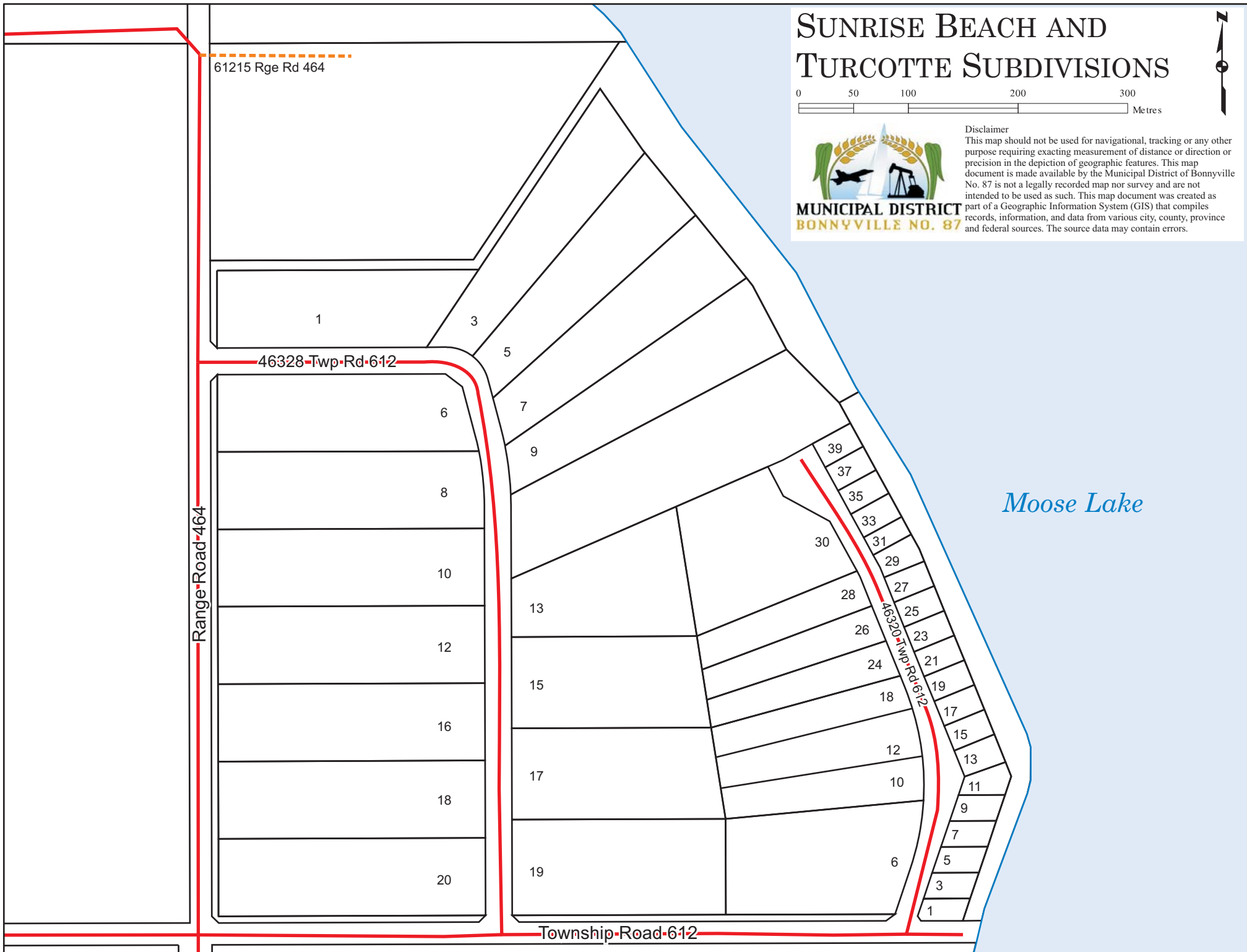
**MUNICIPAL DISTRICT
BONNYVILLE NO. 87**

Disclaimer
 This map should not be used for navigational, tracking or any other purpose requiring exacting measurement of distance or direction or precision in the depiction of geographic features. This map document is made available by the Municipal District of Bonnyville No. 87 is not a legally recorded map nor survey and are not intended to be used as such. This map document was created as part of a Geographic Information System (GIS) that compiles records, information, and data from various city, county, province and federal sources. The source data may contain errors.

SUNRISE BEACH AND TURCOTTE SUBDIVISIONS



Disclaimer
This map should not be used for navigational, tracking or any other purpose requiring exacting measurement of distance or direction or precision in the depiction of geographic features. This map document is made available by the Municipal District of Bonnyville No. 87 is not a legally recorded map nor survey and are not intended to be used as such. This map document was created as part of a Geographic Information System (GIS) that compiles records, information, and data from various city, county, province and federal sources. The source data may contain errors.



MOOSE LAKE SUNSET VIEW

0 50 100 200 Metres



**MUNICIPAL DISTRICT
BONNYVILLE NO. 87**

Disclaimer
This map should not be used for navigational, tracking or any other purpose requiring exacting measurement of distance or direction or precision in the depiction of geographic features. This map document is made available by the Municipal District of Bonnyville No. 87 is not a legally recorded map nor survey and are not intended to be used as such. This map document was created as part of a Geographic Information System (GIS) that compiles records, information, and data from various city, county, province and federal sources. The source data may contain errors.



~~Township Road 610~~

~~60528-Rge-Rd-464A~~

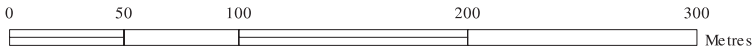
~~Range Road 464A~~

~~60528-Rge-Rd-464A~~

Moose Lake

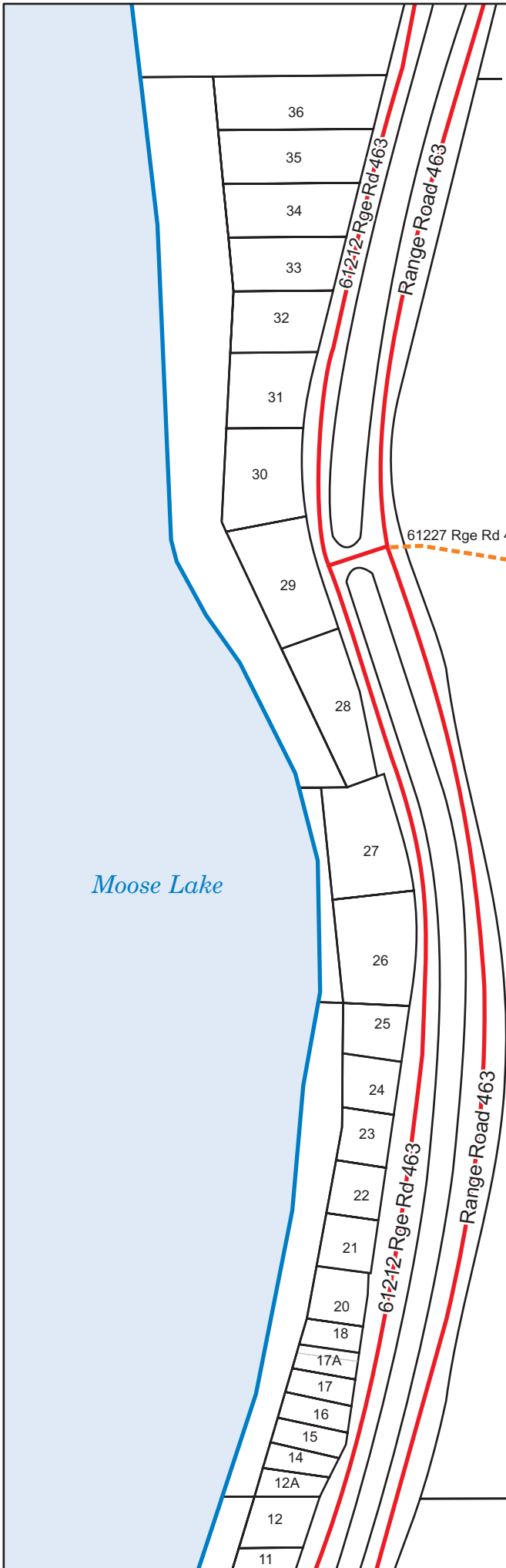


SUNSET BEACH SUBDIVISION- NORTH



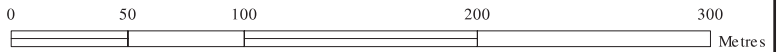
MUNICIPAL DISTRICT
BONNYVILLE NO. 87

Disclaimer
This map should not be used for navigational, tracking or any other purpose requiring exacting measurement of distance or direction or precision in the depiction of geographic features. This map document is made available by the Municipal District of Bonnyville No. 87 is not a legally recorded map nor survey and are not intended to be used as such. This map document was created as part of a Geographic Information System (GIS) that compiles records, information, and data from various city, county, province and federal sources. The source data may contain errors.



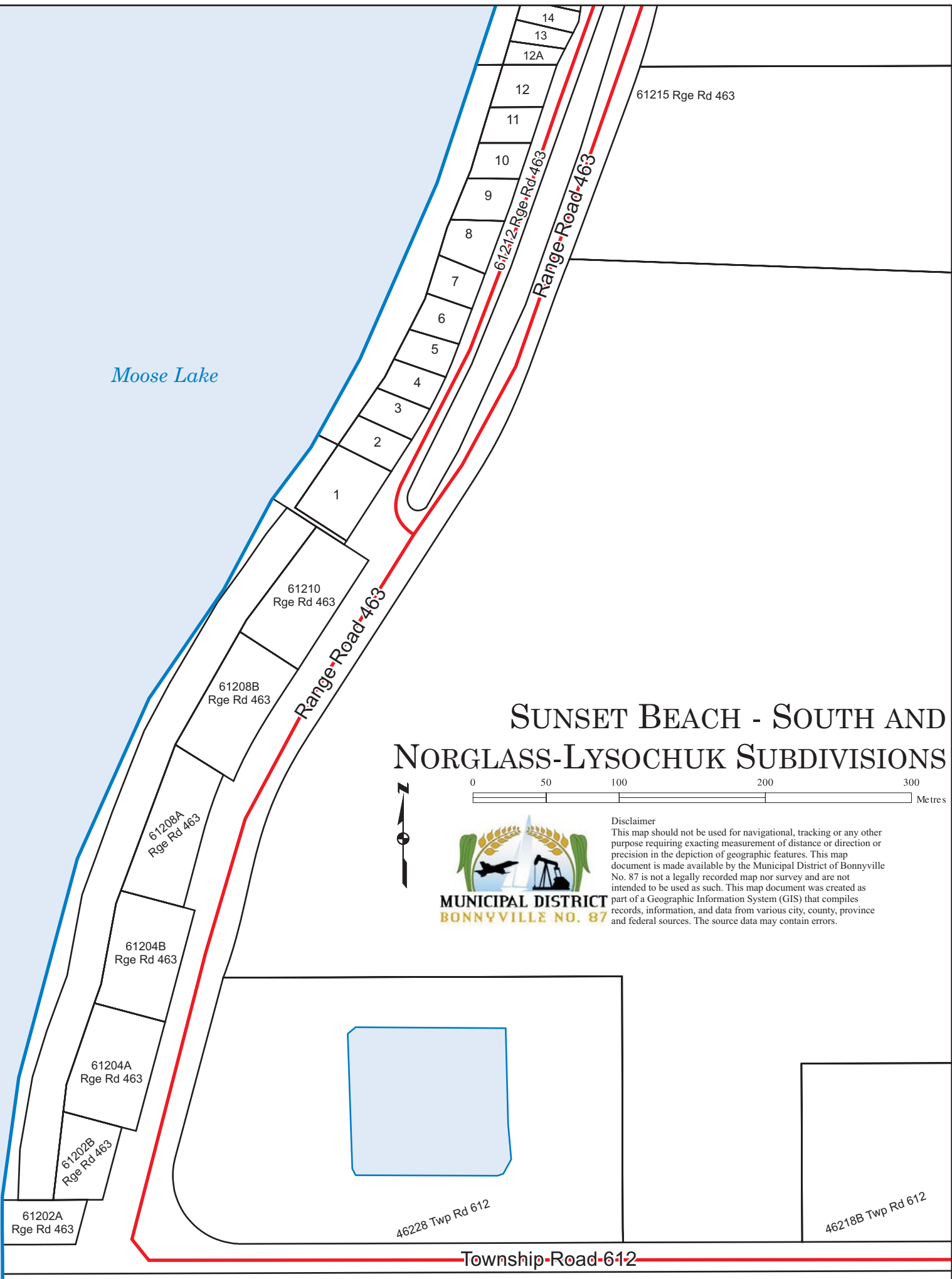
Moose Lake

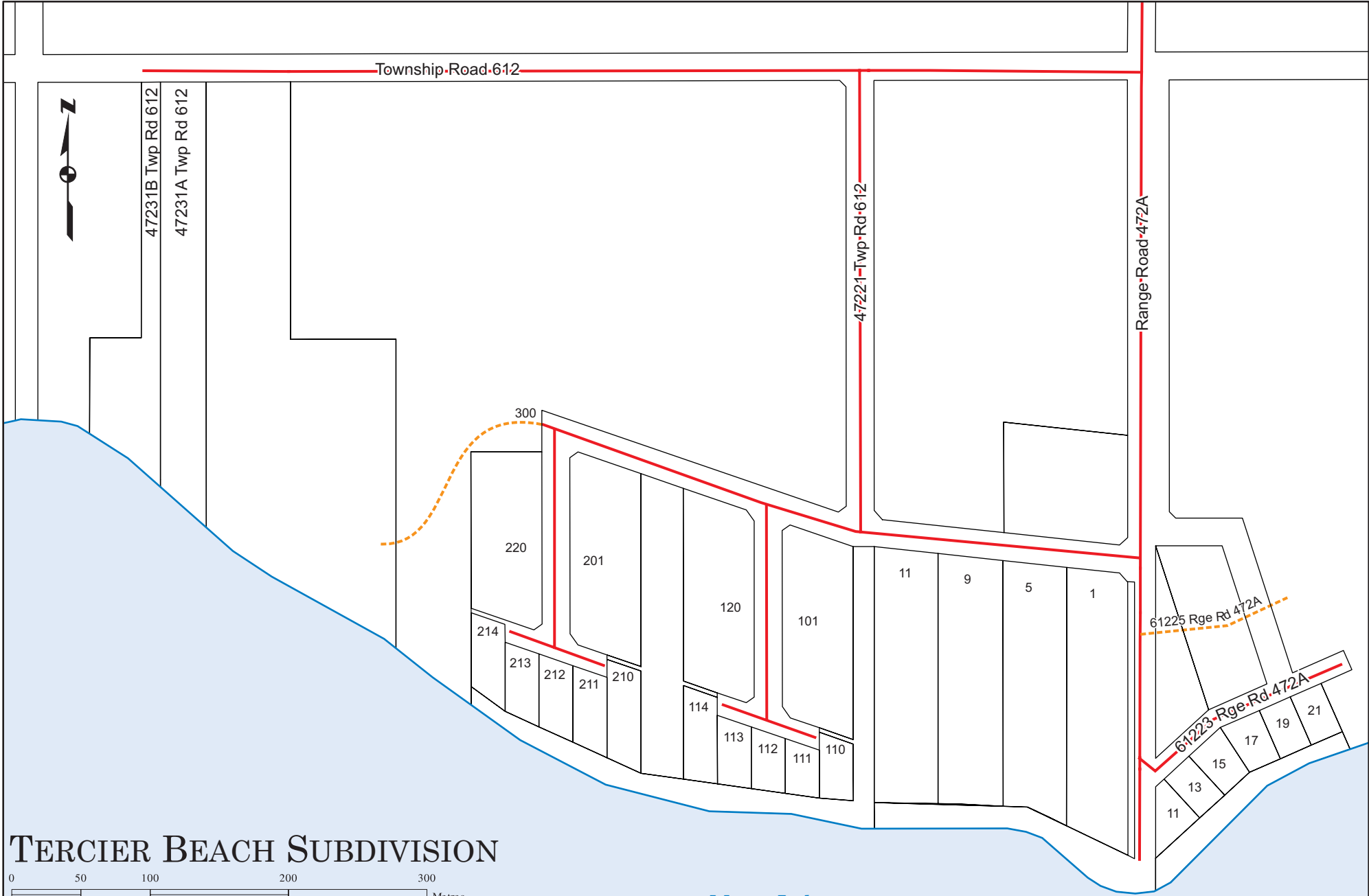
SUNSET BEACH - SOUTH AND NORGLASS-LYSOCHUK SUBDIVISIONS



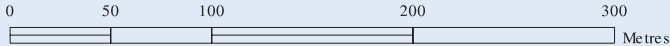
**MUNICIPAL DISTRICT
BONNYVILLE NO. 87**

Disclaimer
This map should not be used for navigational, tracking or any other purpose requiring exacting measurement of distance or direction or precision in the depiction of geographic features. This map document is made available by the Municipal District of Bonnyville No. 87 is not a legally recorded map nor survey and are not intended to be used as such. This map document was created as part of a Geographic Information System (GIS) that compiles records, information, and data from various city, county, province and federal sources. The source data may contain errors.





TERCIER BEACH SUBDIVISION



Moose Lake



Disclaimer
 This map should not be used for navigational, tracking or any other purpose requiring exacting measurement of distance or direction or precision in the depiction of geographic features. This map document is made available by the Municipal District of Bonnyville No. 87 is not a legally recorded map nor survey and are not intended to be used as such. This map document was created as part of a Geographic Information System (GIS) that compiles records, information, and data from various city, county, province and federal sources. The source data may contain errors.

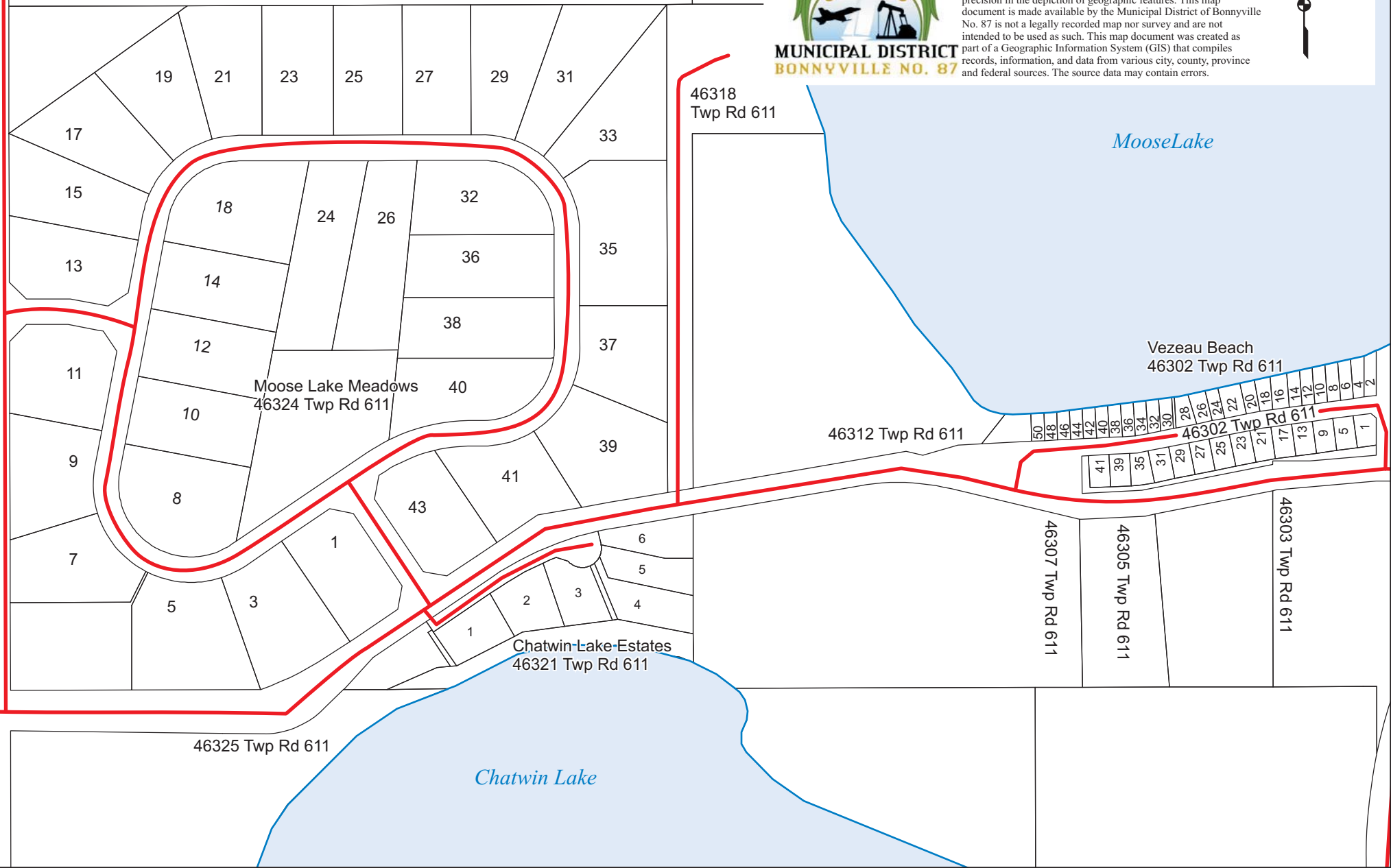
MOOSE LAKE MEADOWS, CHATWIN LAKE ESTATES, AND VESEAU BEACH

0 50 100 200 300 400 Metres



**MUNICIPAL DISTRICT
BONNYVILLE NO. 87**

Disclaimer
This map should not be used for navigational, tracking or any other purpose requiring exacting measurement of distance or direction or precision in the depiction of geographic features. This map document is made available by the Municipal District of Bonnyville No. 87 is not a legally recorded map nor survey and are not intended to be used as such. This map document was created as part of a Geographic Information System (GIS) that compiles records, information, and data from various city, county, province and federal sources. The source data may contain errors.



Moose Lake Meadows
46324 Twp Rd 611

Chatwin Lake Estates
46321 Twp Rd 611

MooseLake

Vezeau Beach
46302 Twp Rd 611

Chatwin Lake

Moose Lake

52 50 48 46 44 42 40 38 36 34 32 30 28 26 24 22 20 18 16 12 10 8 6 4 2

46302-Twp-Rd-611

41 39 35 31 29 27 25 23 21 17 13 9 5 1

Township-Road-611

46307 Twp Rd 611

46305 Twp Rd 611

46303 Twp Rd 611
Bonnyville Golf & Country Club

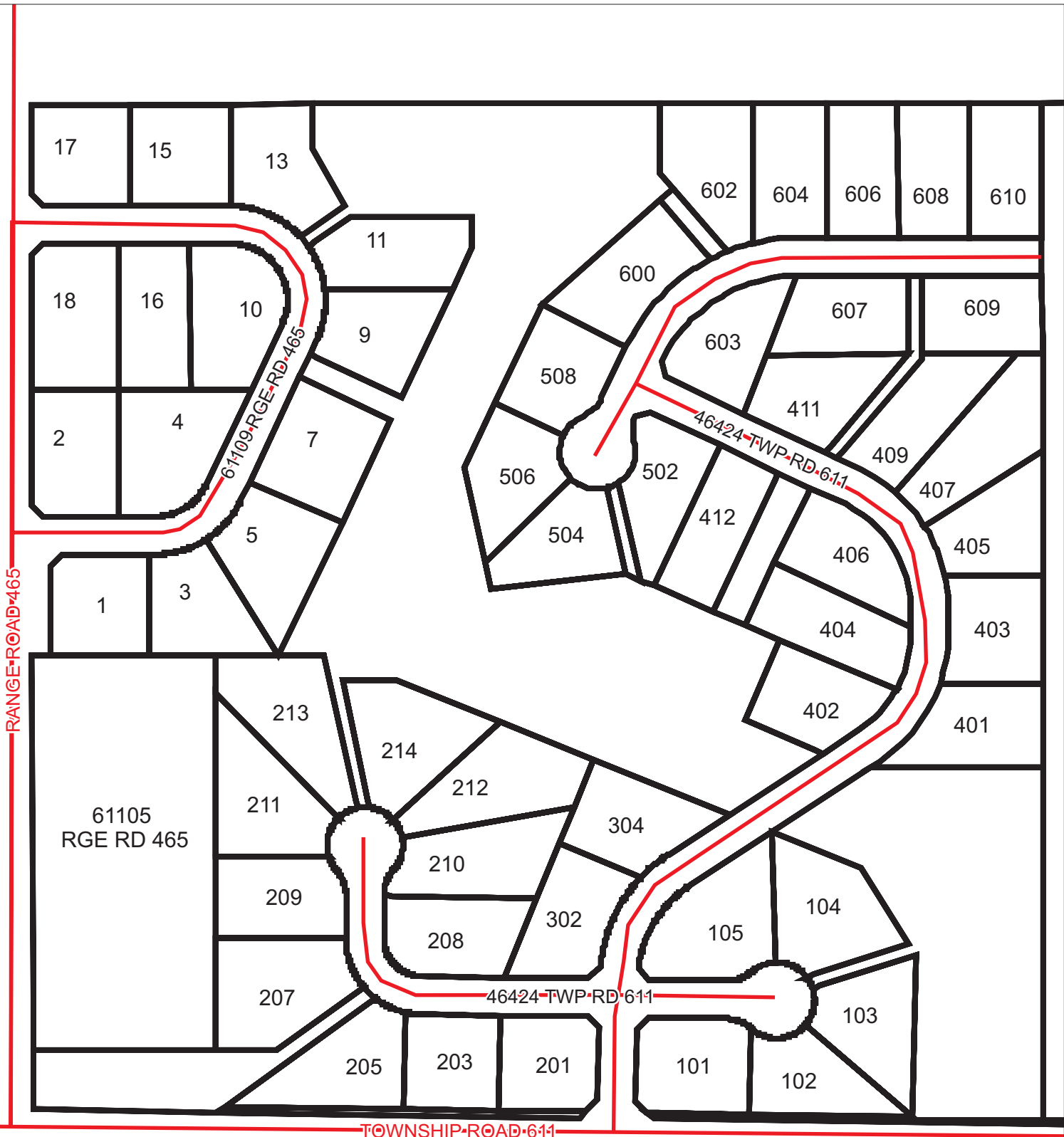
VEZEAU BEACH SUBDIVISION

0 50 100 200 Metres

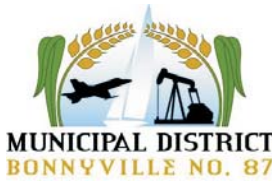


Disclaimer
This map should not be used for navigational, tracking or any other purpose requiring exacting measurement of distance or direction or precision in the depiction of geographic features. This map document is made available by the Municipal District of Bonnyville No. 87 is not a legally recorded map nor survey and are not intended to be used as such. This map document was created as part of a Geographic Information System (GIS) that compiles records, information, and data from various city, county, province and federal sources. The source data may contain errors.





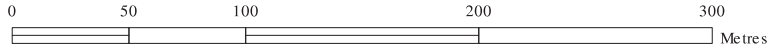
WILLOW RIDGE ESTATES



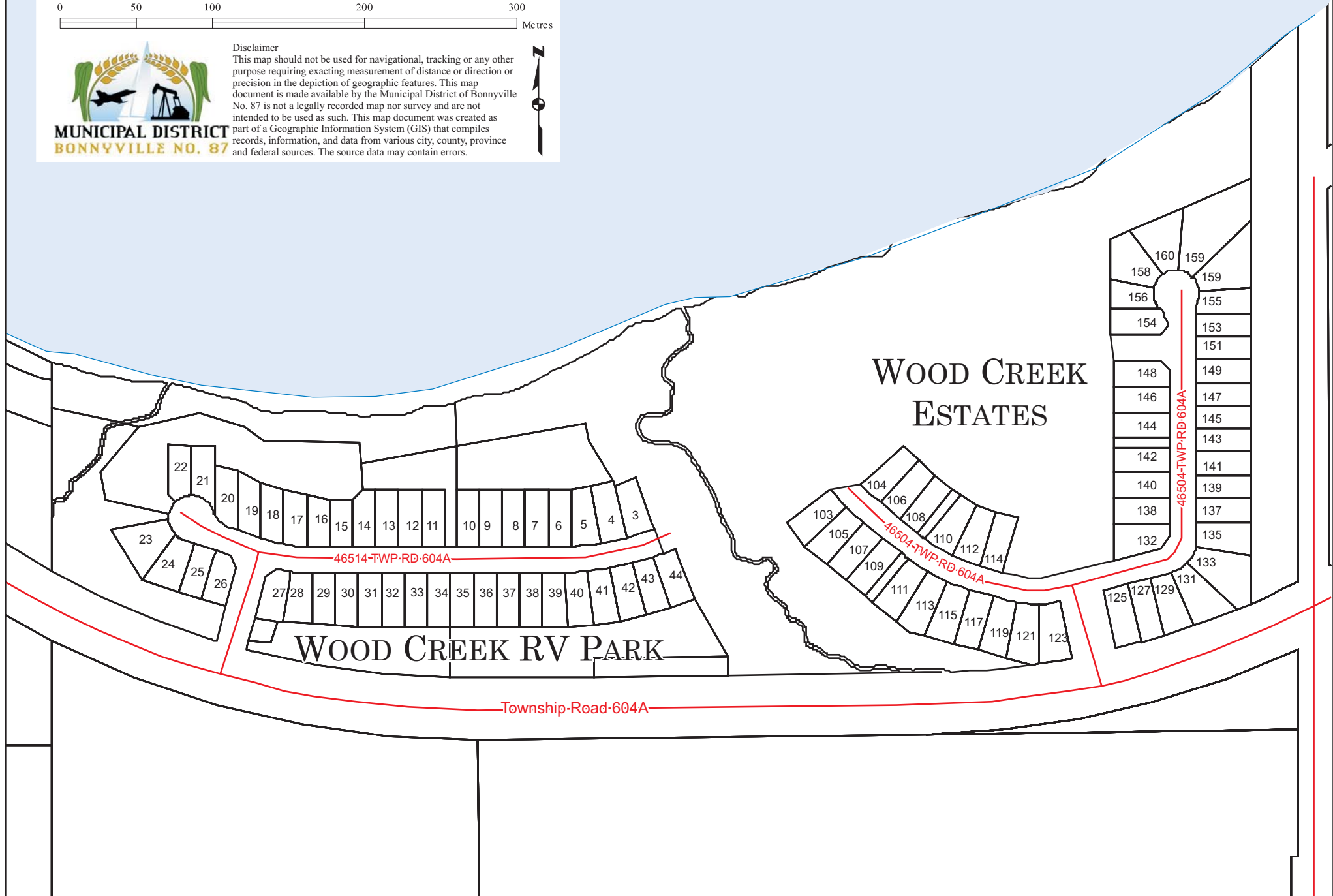
Disclaimer
 This map should not be used for navigational, tracking or any other purpose requiring exacting measurement of distance or direction or precision in the depiction of geographic features. This map document is made available by the Municipal District of Bonnyville No. 87 is not a legally recorded map nor survey and are not intended to be used as such. This map document was created as part of a Geographic Information System (GIS) that compiles records, information, and data from various city, county, province and federal sources. The source data may contain errors.



WOOD CREEK RV PARK & WOOD CREEK ESTATES



Disclaimer
This map should not be used for navigational, tracking or any other purpose requiring exacting measurement of distance or direction or precision in the depiction of geographic features. This map document is made available by the Municipal District of Bonnyville No. 87 is not a legally recorded map nor survey and are not intended to be used as such. This map document was created as part of a Geographic Information System (GIS) that compiles records, information, and data from various city, county, province and federal sources. The source data may contain errors.





Lakeside Village